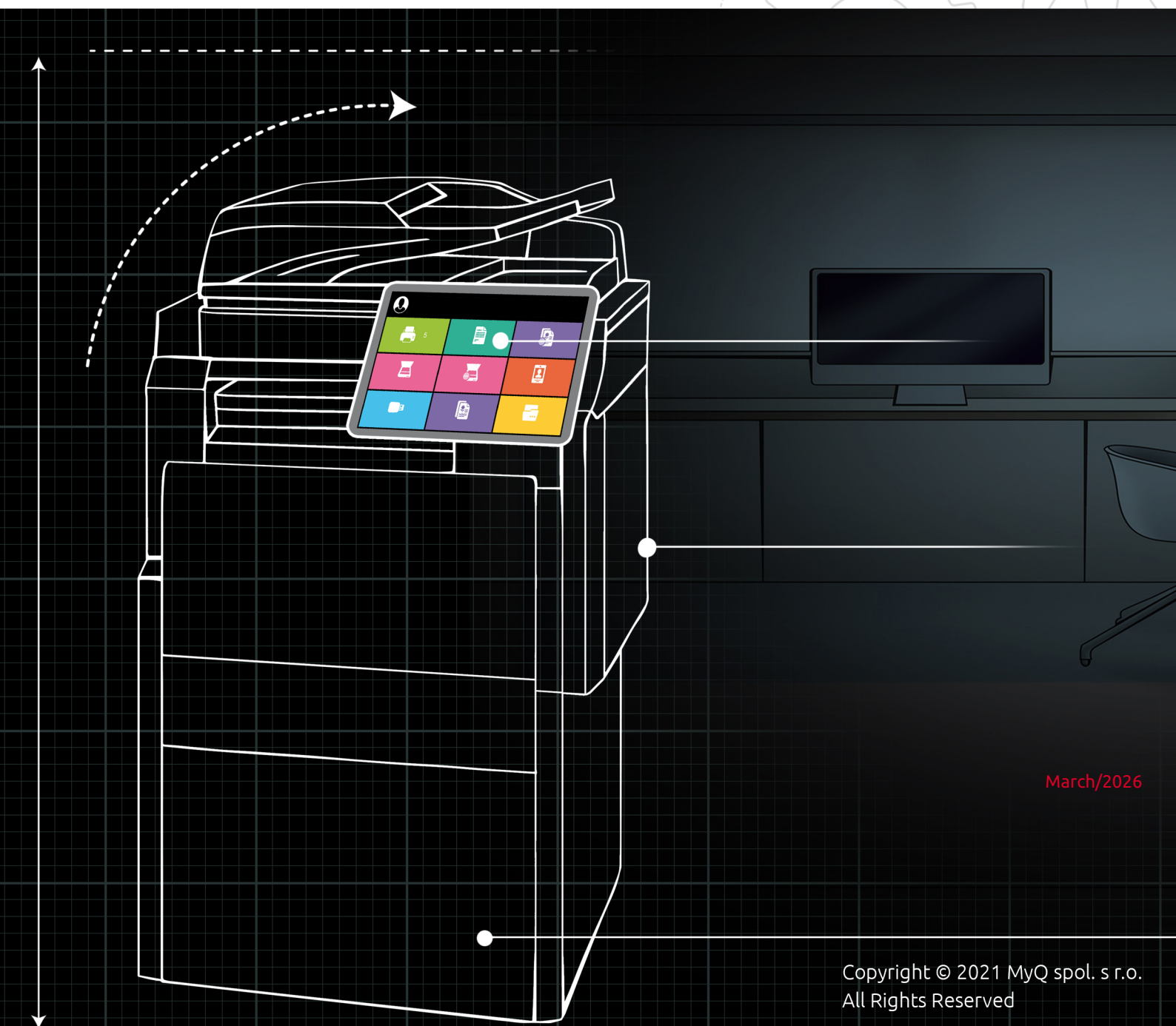


# myq X

Theme Editor 1.0




March/2026

# Table of Contents

1	Basic Information.....	4
1.1	System Requirements .....	4
2	Supported Brands.....	5
3	Installation .....	6
4	Using MyQ Theme Editor .....	7
4.1	Editing an existing style .....	9
4.2	Creating a new style .....	9
5	Importing themes in MyQ .....	11
6	Business Contacts.....	15

## MyQ Theme Editor 1.0

The MyQ Theme Editor is a standalone tool for editing and creating styles for your terminals. By exporting these styles to the MyQ web administrator interface, you can activate them on your terminals. This way, you can change the look and feel of your terminals by changing the color and the images of the terminal actions.

 The guide is also available in [PDF](#).

# 1 Basic Information

The MyQ Theme Editor is a standalone tool for editing and creating styles for your terminals. By exporting these styles to the MyQ web administrator interface, you can activate them on your terminals. This way you can change the look and feel of your terminals, by changing the color and the images of the terminal actions.

You can also create a theme (template) with completely new names for the terminal actions.

Then, adding your company logo to all of the styles would result in having created your own specific look and feel for your company terminals.

In this guide you can find a workflow and instructions on how to install and use MyQ Theme Editor, create a theme with styles, export it and make it visible on your terminals.

## 1.1 System Requirements

- OS - Windows 8.1/10/11, with all the latest updates; only 64bit OS supported. Windows Server 2012/ 2012 R2/ 2016/ 2019/2022, with all the latest updates; only 64bit OS supported.
- Microsoft .NET Framework 4.6.1 or higher.

## 2 Supported Brands

The following brands support the MyQ Theme Editor:

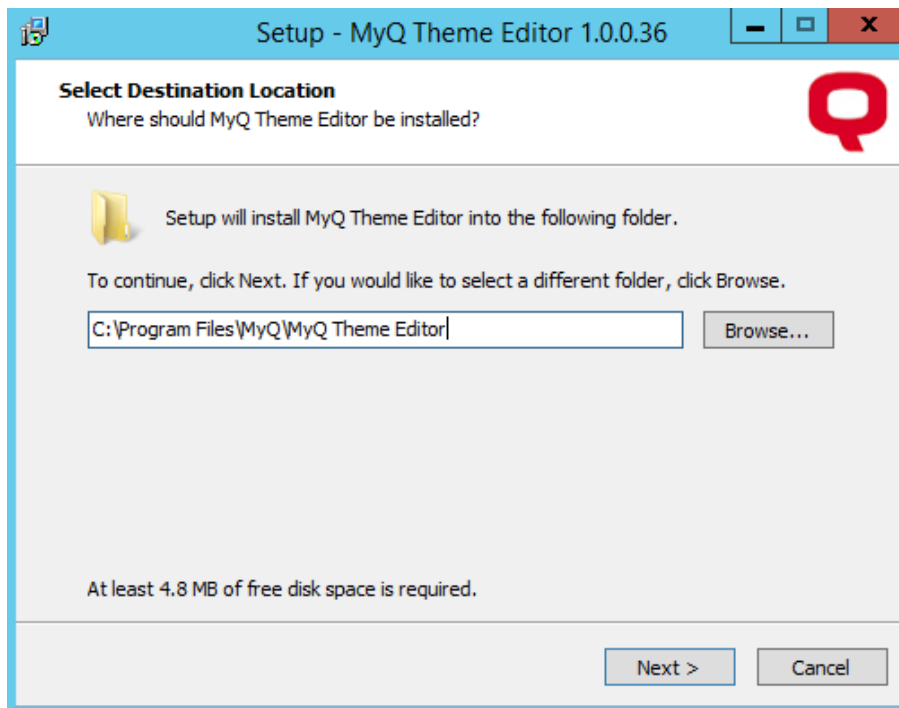
- Canon embedded 8.2+
- Epson embedded 8.1+
- HP Embedded 7.5+ (only black theme supported)
- HP Embedded 8.0+
- Kyocera 7.5.2+
- Ricoh Smart SDK 7.5+ (only black theme supported)
- Sharp embedded 7.5+ (only black theme supported)
- Sharp embedded 8.1.4+
- Toshiba 8.1+
- Xerox 7.6+

## 3 Installation

Download the latest MyQ Theme Editor installation file from the MyQ Community portal.

Run the installation file and the installation wizard starts.

Browse to select the destination folder or select the default location (*C:\Program Files\MyQ\MyQ Theme Editor*) and click **Next**.



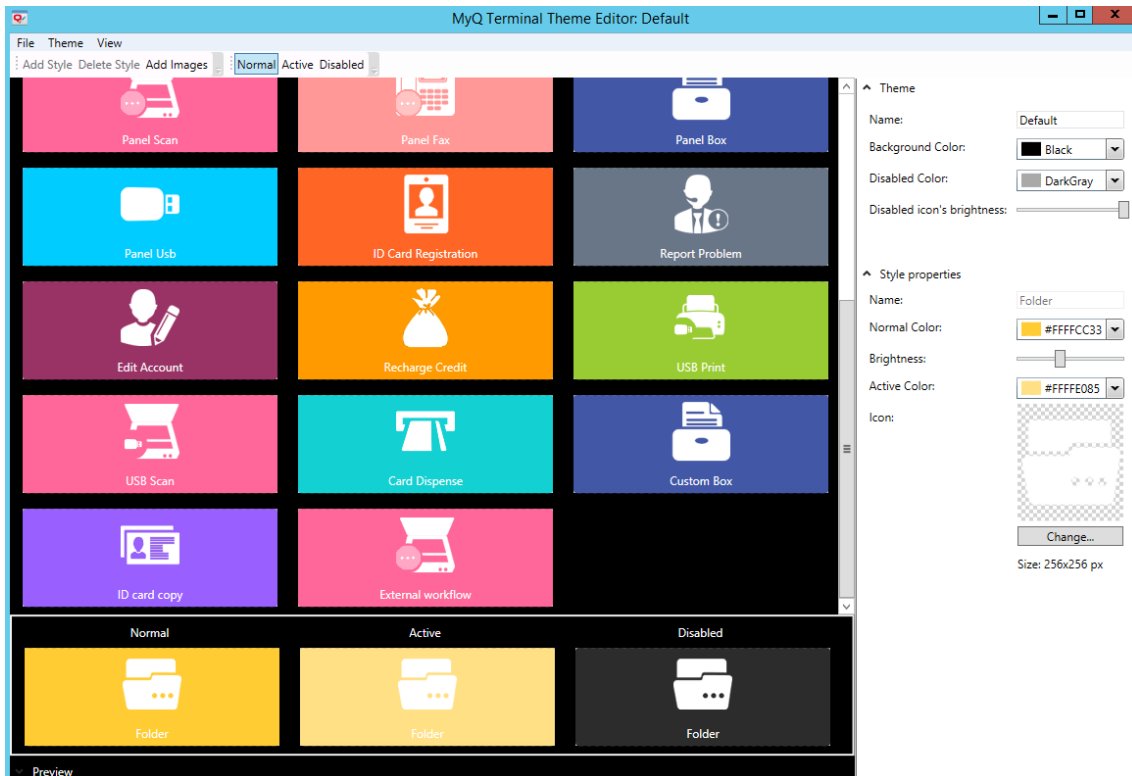
In the Ready to Install window, click **Install**.

MyQ Theme Editor is installed. Keep the **Launch MyQ Theme Editor** option selected to launch it immediately, or deselect it, and click **Finish**.

## 4 Using MyQ Theme Editor

If you kept the **Launch MyQ Theme Editor** option selected during the installation, MyQ Theme Editor opens once you click **Finish** on the installation wizard. You can otherwise open it via the MyQ Theme Editor desktop shortcut, or via the Windows Apps menu.

The editor opens with the Default theme loaded.



On the main menu at the top, you have the following options:

- **File menu**
  - **New Theme** - Opens a new theme using the default theme template.
  - **New Empty Theme** - Opens a new empty theme template.
  - **Open** - Opens the Default Themes folder (`C:\ProgramData\MyQ\TerminalThemeEditor\DefaultThemes\Default`), where themes are stored. Choose a theme (in *json* format), and click **Open** to open it.
  - **Save** - Saves the changes in the current theme.
  - **Save as** - Saves the current theme with additional options (location, name, etc.).
  - **Close** - Closes the currently open theme template.
  - **Import Theme** - Opens the Default Themes folder (`C:\ProgramData\MyQ\TerminalThemeEditor\DefaultThemes\Default`), where themes are stored. Choose a theme (in *zip* format), and click **Open** to import it.
  - **Export Theme** - Exports the current theme to a zip file. Choose the destination for the export and click **Save**.

- **Exit** - Closes MyQ Theme Editor.
- **Recent Files** - Displays a list of any recently used files.
- **Theme menu**
  - **Add Style** - Adds a new style tile in the editor.
  - **Delete Style** - Deletes the selected style tile.
  - **Add Images** - Opens a dialog where you can browse for and add images (in *png* and *bmp* format) to your theme. Select the image and click **Open**.
- **View menu**
  - **Normal** - Displays all the tiles in the normal style. This style is used for any terminal action in an idle state.
  - **Active** - Displays all the tiles in the active style. This style is used for any currently active terminal action.
  - **Disabled** - Displays all the tiles in the disabled style. This style is used for any currently disabled terminal actions.

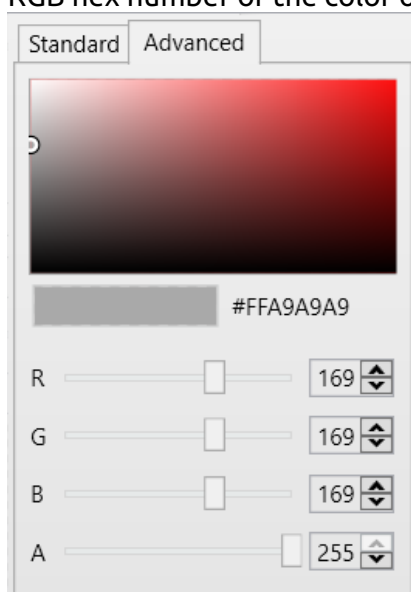
The ribbon below the main menu contains the following menu shortcuts: Add Style, Delete Style, Add Images, Normal, Active, Disabled.

You can see all the available styles in the editor. Once you select one, it is displayed in all three different styles (normal, active, disabled) in the preview at the bottom.

On the panel to the right, there are two sections where you can modify your themes and styles: the **Theme** section, and the **Style properties** section.

The **Theme** section contains the following properties:

- **Name** - Add a name for your theme.
- **Background Color** - Choose from the available *black* or *white* colors for the terminal's background. The white background is only available for Kyocera terminals.
- **Disabled Color** - Choose the color to use for the disabled style. Click on the arrow next to the color. In the drop-down, you can either choose from the available colors in the **Standard** tab, or go to the **Advanced** tab and set the RGB hex number of the color of your choosing.



- **Disabled icon's brightness** - Move the slider left or right to adjust the brightness for the disabled icon.

The **Style properties** section contains the following properties:

- **Name** - Add a name for the style tile. This is only editable when you add a new style.
- **Normal Color** - Choose the color to use for the normal style. Click on the arrow next to the color. In the drop-down, you can either choose from the available colors in the **Standard** tab, or go to the **Advanced** tab and set the RGB hex number of the color of your choosing.
- **Brightness** - Move the slider left or right to adjust the color's brightness.
- **Active Color** - Choose the color to use for the active style. Click on the arrow next to the color. In the drop-down, you can either choose from the available colors in the **Standard** tab, or go to the **Advanced** tab and set the RGB hex number of the color of your choosing.
- **Icon** - Click **Change** to choose a different icon for your style.

## 4.1 Editing an existing style

To edit an existing style:

1. Open MyQ Theme Editor, click **File** at the main menu, and select **New theme**.
2. On the panel to the right, in the **Theme** section, add a **Name** for your new theme.
3. Select the theme's **Background Color** (black by default, white only available for Kyocera terminals).
4. Select the **Disabled Color** from the colors drop-down.
5. Adjust the **Disabled icon's Brightness** with the slider.
6. On the **Style properties** section, select the **Normal Color** from the colors drop-down.
7. Adjust the normal color's **Brightness** with the slider.
8. Select the **Active Color** from the colors drop-down.
9. **Change** the style's icon.
10. On the main menu, click **File**, and select **Save as** to save your new theme.
11. On the main menu, click **File**, and select **Export Theme**, to export your theme so that it can be used in MyQ.

## 4.2 Creating a new style

You can create a new style in any available theme. This means that you can add a style to the Default theme template, to a new Empty theme, or to any theme that you have created or imported.

1. Open MyQ Theme Editor, click **File** at the main menu, and select the theme of your choice by either selecting **New theme**, **New Empty Theme**, or **Open**.
2. Click **Add Style** on the ribbon (or on the main menu, click **Theme, Add Style**). Your new style is added to the editor, and you can also see it in the preview.
3. On the panel to the right, in the **Theme** section, you can change the theme's **Name**.

4. Select the theme's **Background Color** (black by default, white only available for Kyocera terminals).
5. Select the **Disabled Color** from the colors drop-down.
6. Adjust the **Disabled icon's Brightness** with the slider.
7. On the **Style properties** section, add a **Name** for your new style.
8. Select the **Normal Color** from the colors drop-down.
9. Adjust the normal color's **Brightness** with the slider.
10. Select the **Active Color** from the colors drop-down.
11. **Change** the style's icon.
12. On the main menu, click **File**, and select **Save as** to save your changes, or click **Delete Style** on the ribbon, to delete the selected style.
13. On the main menu, click **File**, and select **Export Theme**, to export your theme so that it can be used in MyQ.

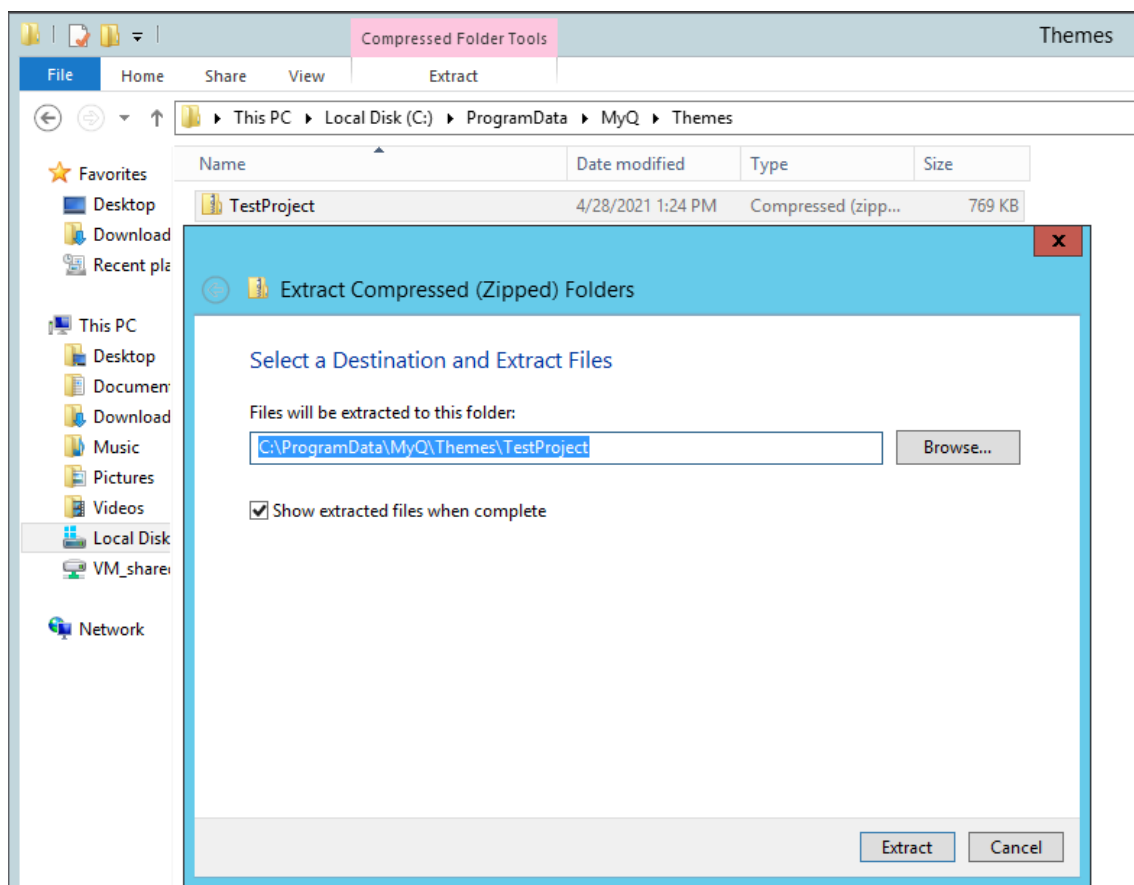
## 5 Importing themes in MyQ

Once you have created/edited a theme in MyQ Theme Editor, you must export it and then import it to the MyQ web administrator interface, in order to make it available to your terminals.

On MyQ Theme Editor, click **File** at the main menu, and select **Export Theme**. Change the destination of the export if needed, and click **Save**. Your theme is exported as a *.zip* file. Copy the *.zip* file.

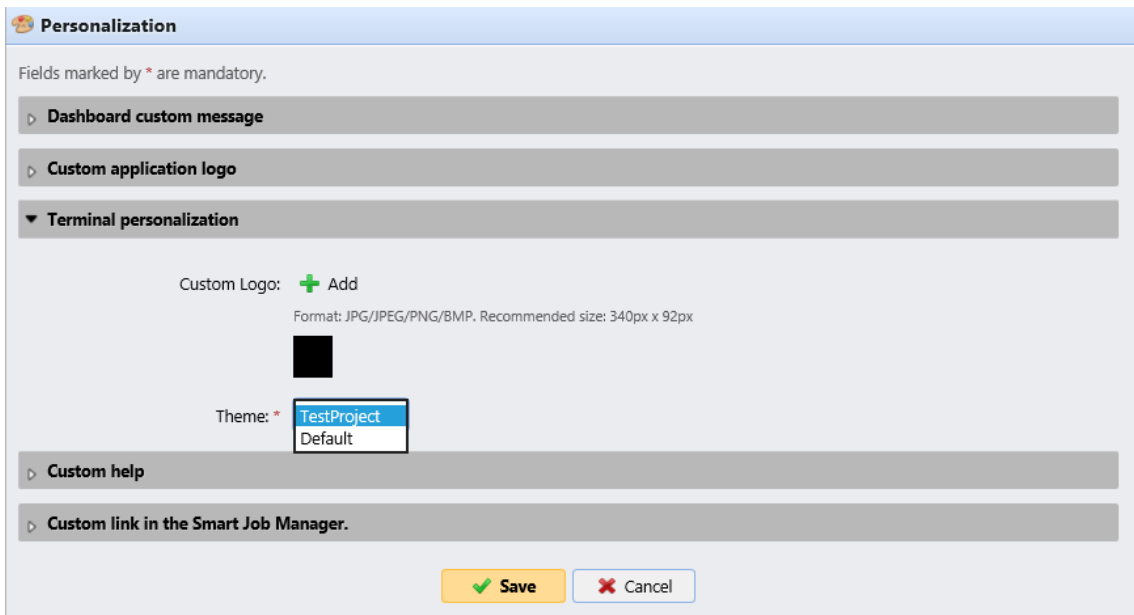
Go to your MyQ Data folder (located by default in *C:\ProgramData\MyQ\*) and create a new folder named **Themes** (*C:\ProgramData\MyQ\Themes\*).

Paste the *.zip* file in the **Themes** folder and extract it to a sub-folder.



Log in to the MyQ web administrator interface and go to **MyQ, Settings, Personalization**.

In the **Terminal personalization** section, click on the arrow next to **Theme**, and select your imported theme from the drop-down. Click **Save** and confirm the restart in the pop-up window.

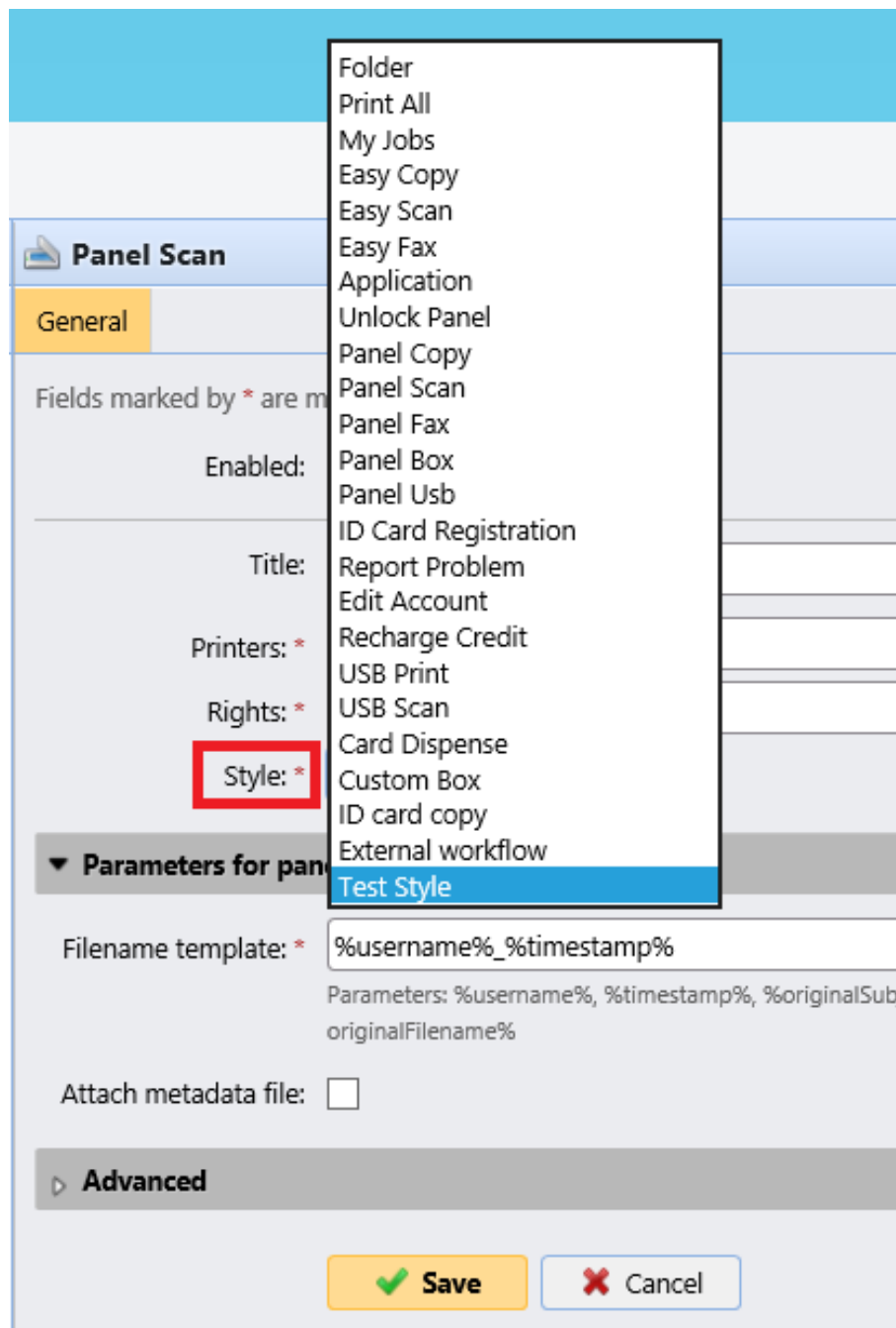


Your theme is now imported in MyQ and you can use it to stylize your terminal actions.

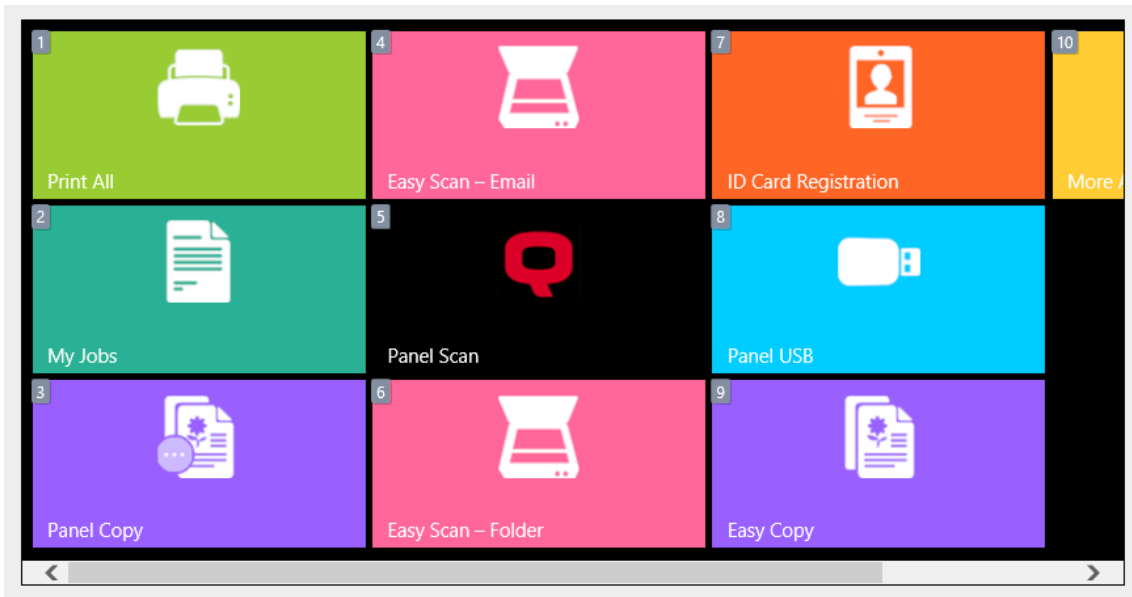
Go to **MyQ, Settings, Terminal Actions**.

Add a new terminal action node or double-click on an existing node to open its properties panel to the right.

In the **Style** parameter, select your newly imported style from the list, and click Save.



The imported style is applied to the terminal action node, visible in the preview and on the embedded terminals that use this terminal action.



## 6 Business Contacts

<b>MyQ® Manufacturer</b>	<b>MyQ® spol. s r.o.</b> Harfa Business Center, Ceskomoravska 2532/19b, 190 00 Prague 9, Czech Republic  ID no. 615 06 133 MyQ® spol. s r.o. is registered in the Commercial Register at the Municipal Court in Prague, file no. C 29842 (hereinafter as “MyQ®”)
<b>Business information</b>	<a href="http://www.myq-solution.com">http://www.myq-solution.com</a> <a href="mailto:info@myq-solution.com">info@myq-solution.com</a>
<b>Technical support</b>	<a href="mailto:support@myq-solution.com">support@myq-solution.com</a>
<b>Notice</b>	<p>MANUFACTURER WILL NOT BE LIABLE FOR ANY LOSS OR DAMAGE CAUSED BY INSTALLATION OR OPERATION OF THE SOFTWARE AND HARDWARE PARTS OF THE MyQ® PRINTING SOLUTION.</p> <p>This manual, its content, design and structure are protected by copyright. Copying or other reproduction of all or part of this guide, or any copyrightable subject matter without the prior written consent of MyQ® is prohibited and can be punishable.</p> <p>MyQ® is not responsible for the content of this manual, particularly regarding its integrity, currency and commercial occupancy. All the material published here is exclusively of informative character.</p> <p>This manual is subject to change without notification. MyQ® is not obliged to make these changes periodically nor announce them, and is not responsible for currently published information to be compatible with the latest version of the MyQ® printing solution.</p>
<b>Trademarks</b>	<p>“MyQ®”, including its logos, is a registered trademark of MyQ®. Any use of trademarks of MyQ® including its logos without the prior written consent of MyQ® Company is prohibited. The trademark and product name are protected by MyQ® and/or its local affiliates.</p>