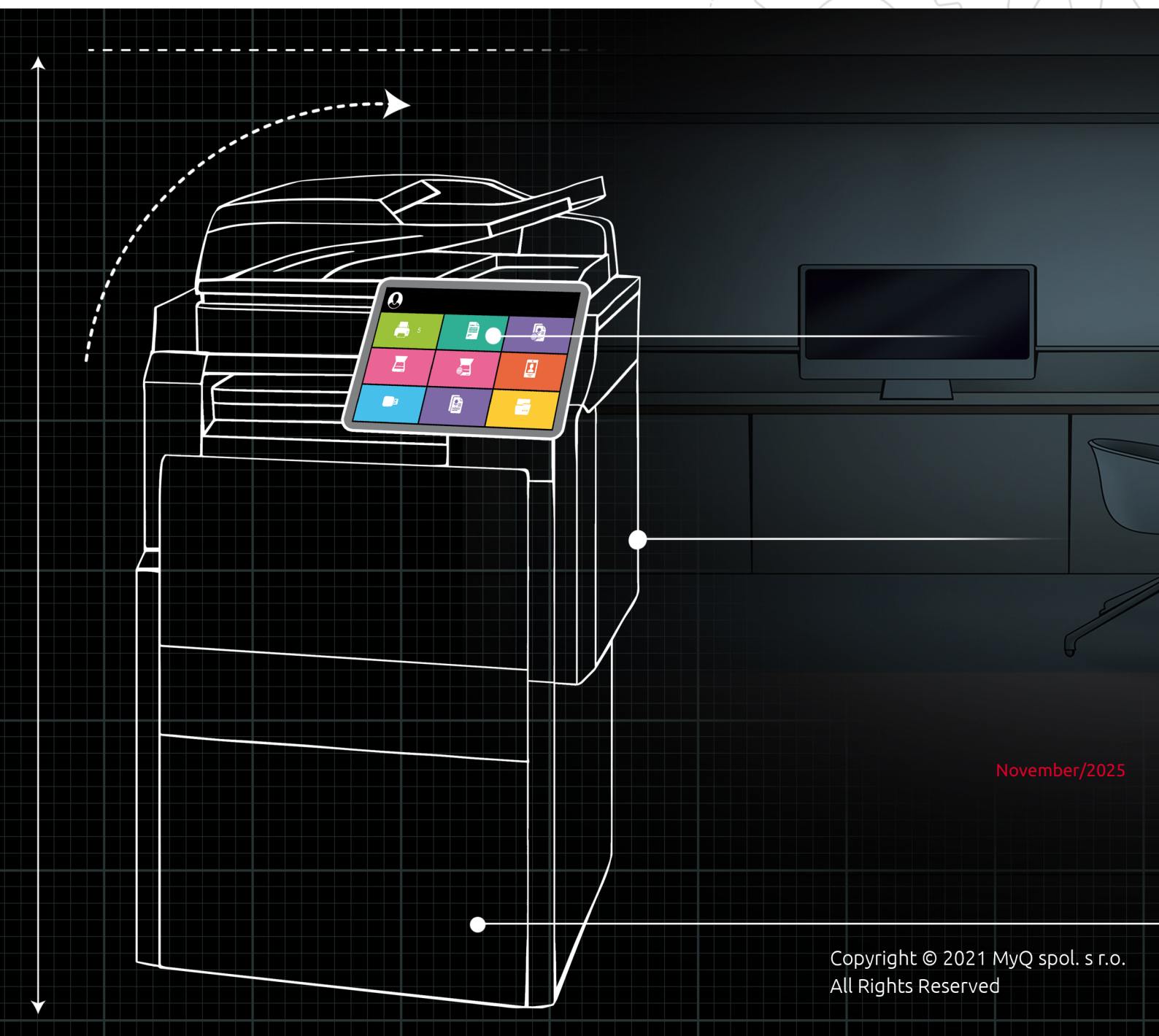


myQ X

Kyocera Embedded Lite 8.1



November/2025

Copyright © 2021 MyQ spol. s r.o.
All Rights Reserved

Table of Contents

1	Basic Information	4
2	Supported Printing Devices	5
3	Installation.....	25
3.1	Remote installation via Printer Discovery.....	25
3.1.1	Creating a Printer Discovery	25
3.2	Configuring a Printer Discovery	27
3.2.1	Filter section.....	27
3.2.2	Every run actions	27
3.2.3	First run actions	28
3.2.4	Configuration Profiles	29
3.3	Additional Settings	32
3.4	Manual Installation	34
3.4.1	Change Job Accounting Settings	34
3.4.2	Change Authentication Settings	35
3.4.3	Change Protocol Settings.....	36
3.4.4	Change Email Settings.....	36
3.4.5	Change Network Security Settings.....	36
3.4.6	Assigning the Terminal to a Device	37
3.4.7	Automatic Logout	39
3.5	Secure Run of the Terminal.....	40
4	Licenses	41
5	Terminal Actions.....	42
5.1	Print actions	42
5.2	Scan actions.....	42
5.3	Copy actions	42
5.4	Fax actions	43
5.5	Logging out	43
5.6	Adding and removing buttons from the Home screen.....	43
6	Credit	44
7	Quota	45
8	USB Card Reader connection.....	46
9	Uninstallation.....	47
10	Change Log.....	48
11	Business Contacts	49

MyQ Kyocera Embedded Lite Terminal 8.1

The MyQ Kyocera Embedded Lite terminal is a feature available on selected Kyocera printing devices, which enhances the functionality of the devices in the MyQ system.

This document provides readers with information needed to install and administer a Kyocera Embedded Lite terminal. It guides through the installation and configuration of the Embedded Lite terminal and describes its basic features.



All changes compared to the previous version are listed in the [change log](#).



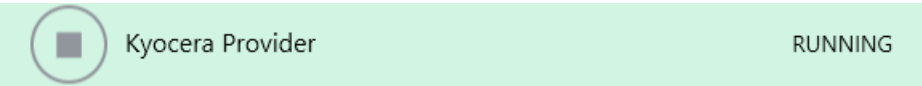
The guide is also available in [PDF](#).

1 Basic Information

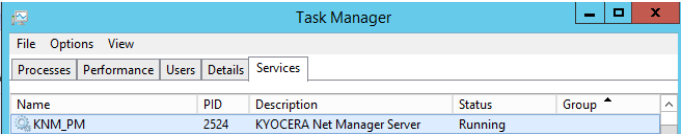
The MyQ Kyocera Embedded Lite terminal is a feature available on selected Kyocera printing devices, which enhances the functionality of the devices in the MyQ system. It enables user authentication on the device, and provides additional options within user sessions, such as pull print or scanning directly to a user's folder or email.

The terminal communicates with MyQ via the Kyocera Provider service, which is a standard part of the MyQ installation. The service manages remote installation of the Embedded Lite terminal and provides the terminal with the all the necessary data from the MyQ server. The data include domain information, users' credentials, users' jobs, users' accounting information, etc.

For the terminal to properly function, the Kyocera Provider service needs to run on the MyQ Server. Make sure it is enabled in the MyQ Easy Config application. For more information, see *MyQ Easy Config* in the [MyQ Print Server](#) guide.

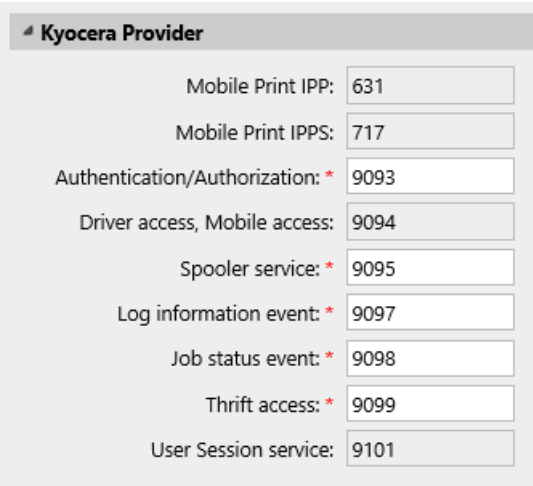


You can also check the current state of the service in the Windows Task Manager, where it is called *KNM_PM*.



Ports used by Kyocera Provider

On the **Network** settings tab, in the MyQ web administrator interface, in the **Kyocera Provider** section, you can overview all the ports used by the service. It is strongly recommended not changing the default ports of the service.



2 Supported Printing Devices

FS, LS Series	Paper size	Color/B&W	Device type
FS-2100	A4	B&W	Printer
FS-4100	A4	B&W	Printer
FS-4200	A4	B&W	Printer
FS-4300	A4	B&W	Printer
FS-C8600DN	A4	Color	Printer
FS-C8650DN	A4	Color	Printer
FS-1030MFP	A4	B&W	Multifunction printer
FS-1035MFP	A4	B&W	Multifunction printer
FS-1130MFP	A4	B&W	Multifunction printer
FS-1135MFP	A4	B&W	Multifunction printer
FS-3040MFP+	A4	B&W	Multifunction printer
FS-3140MFP+	A4	B&W	Multifunction printer
FS-3540MFP	A4	B&W	Multifunction printer
FS-3640MFP	A4	B&W	Multifunction printer

FS, LS Series	Paper size	Color/B&W	Device type
FS-C2026MFP+	A4	Color	Multifunction printer
FS-C2126MFP+	A4	Color	Multifunction printer
FS-C2526MFP	A4	Color	Multifunction printer
FS-C2626MFP	A4	Color	Multifunction printer
FS-6025MFP	A3	B&W	Multifunction printer
FS-6030MFP	A3	B&W	Multifunction printer
FS-6525MFP	A3	B&W	Multifunction printer
FS-6530MFP	A3	B&W	Multifunction printer
FS-C8020MFP	A3	Color	Multifunction printer
FS-C8025MFP	A3	Color	Multifunction printer
FS-C8520MFP	A3	Color	Multifunction printer
FS-C8525MFP	A3	Color	Multifunction printer
FS-1030MFP/DP	A4	B&W	Multifunction printer

FS, LS Series	Paper size	Color/B&W	Device type
FS-1035MFP/DP	A4	B&W	Multifunction printer
FS-6025MFP/B	A4	B&W	Multifunction printer
FS-4300DN	A4	B&W	Printer
FS-4200DN	A4	B&W	Printer
FS-2100DN	A4	B&W	Printer
FS-4100DN	A4	B&W	Printer
LS-C8650DN	A4	Color	Printer
LS-3140MFP+	A4	B&W	Multifunction printer
LS-3640MFP	A4	B&W	Multifunction printer
LS-6025MFP	A3	B&W	Multifunction printer
LS-1035MFP	A4	B&W	Multifunction printer
LS-1135MFP	A4	B&W	Multifunction printer
LS-2100	A4	B&W	Printer
LS-4200	A4	B&W	Printer
LS-4300	A4	B&W	Printer
LS-C8600DN	A4	Color	Printer

ECOSYS Series	Paper size	Color/B&W	Device type
ECOSYS P2040dn	A4	B&W	Printer (with IC card reader)
ECOSYS P2040dw	A4	B&W	Printer (with IC card reader)
ECOSYS M2235dn	A4	B&W	Multifunction printer
ECOSYS M2735dw	A4	B&W	Multifunction printer
ECOSYS P3045dn	A4	B&W	Printer
ECOSYS P3050dn	A4	B&W	Printer
ECOSYS P3055dn	A4	B&W	Printer
ECOSYS P3060dn	A4	B&W	Printer
ECOSYS P4035	A4	B&W	Printer
ECOSYS P4040	A4	B&W	Printer
ECOSYS P4045	A4	B&W	Printer
ECOSYS P5021cdn	A4	Color	Printer (with IC card reader)
ECOSYS P5021cdw	A4	Color	Printer (with IC card reader)
ECOSYS P5026cdn	A4	Color	Printer (with IC card reader)
ECOSYS P5026cdw	A4	Color	Printer (with IC card reader)
ECOSYS P6035cdn	A4	Color	Printer

ECOSYS Series	Paper size	Color/B&W	Device type
ECOSYS P6130cdn	A4	Color	Printer (with IC card reader)
ECOSYS P6230cdn	A4	Color	Printer (with IC card reader)
ECOSYS P6235cdn	A4	Color	Printer
ECOSYS P7040cdn	A4	Color	Printer
ECOSYS P7240cdn	A4	Color	Printer
ECOSYS M2030dn	A4	B&W	Multifunction printer
ECOSYS M2035dn	A4	B&W	Multifunction printer
ECOSYS M2040dn	A4	B&W	Multifunction printer
ECOSYS M2135dn	A4	B&W	Multifunction printer
ECOSYS M2530dn	A4	B&W	Multifunction printer
ECOSYS M2535dn	A4	B&W	Multifunction printer
ECOSYS M2540dn	A4	B&W	Multifunction printer
ECOSYS M2540dw	A4	B&W	Multifunction printer
ECOSYS M2635dn	A4	B&W	Multifunction printer
ECOSYS M2635dw	A4	B&W	Multifunction printer
ECOSYS M2640idw	A4	B&W	Multifunction printer
ECOSYS M2735dn	A4	B&W	Multifunction printer
ECOSYS M3040dn	A4	B&W	Multifunction printer

ECOSYS Series	Paper size	Color/B&W	Device type
ECOSYS M3040idn	A4	B&W	Multifunction printer
ECOSYS M3540dn	A4	B&W	Multifunction printer
ECOSYS M3540idn	A4	B&W	Multifunction printer
ECOSYS M3550idn	A4	B&W	Multifunction printer
ECOSYS M3560idn	A4	B&W	Multifunction printer
ECOSYS M2835dw	A4	B&W	Multifunction printer
ECOSYS M4028idn	A4	B&W	Multifunction printer
ECOSYS M3145dn	A4	B&W	Multifunction printer
ECOSYS M5521cdn	A4	Color	Multifunction printer
ECOSYS M5521cdw	A4	Color	Multifunction printer
ECOSYS M5526cdn	A4	Color	Multifunction printer
ECOSYS M5526cdw	A4	Color	Multifunction printer
ECOSYS M6026cdn	A4	Color	Multifunction printer
ECOSYS M6026cidn	A4	Color	Multifunction printer
ECOSYS M6030cdn	A4	Color	Multifunction printer
ECOSYS M6035cidn	A4	Color	Multifunction printer
ECOSYS M6230cidn	A4	Color	Multifunction printer

ECOSYS Series	Paper size	Color/B&W	Device type
ECOSYS M6235cidn	A4	Color	Multifunction printer
ECOSYS M6526cdn	A4	Color	Multifunction printer
ECOSYS M6526cidn	A4	Color	Multifunction printer
ECOSYS M6530cdn	A4	Color	Multifunction printer
ECOSYS M6535cidn	A4	Color	Multifunction printer
ECOSYS M8024cidn	A4	Color	Multifunction printer
ECOSYS M8124cidn	A4	Color	Multifunction printer
ECOSYS M3145idn	A4	B&W	Multifunction printer
ECOSYS M3645dn	A4	B&W	Multifunction printer
ECOSYS M3645idn	A4	B&W	Multifunction printer
ECOSYS M3655idn	A4	B&W	Multifunction printer
ECOSYS M3660idn	A4	B&W	Multifunction printer
ECOSYS M3860idn	A4	B&W	Multifunction printer
ECOSYS M3860idnf	A4	B&W	Multifunction printer
ECOSYS M4226idn	A4	B&W	Multifunction printer
ECOSYS M4230idn	A4	B&W	Multifunction printer

ECOSYS Series	Paper size	Color/B&W	Device type
ECOSYS M5021cdn	A4	Color	Multifunction printer
ECOSYS M6630cidn	A4	Color	Multifunction printer
ECOSYS M6635cidn	A4	Color	Multifunction printer
ECOSYS M8224cidn	A4	Color	Multifunction printer
ECOSYS M8228cidn	A4	Color	Multifunction printer
ECOSYS MA3500cifx	A4	Color	Multifunction printer
ECOSYS MA3500cix	A4	Color	Multifunction printer
ECOSYS MA4000cifx	A4	Color	Multifunction printer
ECOSYS MA4000cix	A4	Color	Multifunction printer
ECOSYS P3145dn	A4	B&W	Printer
ECOSYS P3150dn	A4	B&W	Printer
ECOSYS P3155dn	A4	B&W	Printer
ECOSYS P3160dn	A4	B&W	Printer
ECOSYS P3260dn	A4	B&W	Printer
ECOSYS P4060dn	A4	B&W	Printer

ECOSYS Series	Paper size	Color/B&W	Device type
ECOSYS P4135dn	A4	B&W	Printer
ECOSYS P4140dn	A4	B&W	Printer
ECOSYS P4145dn	A4	B&W	Printer
ECOSYS P5018cdn	A4	B&W	Printer (with IC card reader)
ECOSYS P8060cdn	A4	Color	Printer
ECOSYS PA3500cx	A4	Color	Printer
ECOSYS PA4000cx	A4	Color	Printer
ECOSYS PA4500cx	A4	Color	Printer
ECOSYS M8130cidn	A4	Color	Multifunction printer
ECOSYS P2230dn	A4	B&W	Printer (with IC card reader)
ECOSYS P4040dn	A4	B&W	Printer
ECOSYS P4035dn	A4	B&W	Printer
ECOSYS P4045dn	A4	B&W	Printer
ECOSYS PA2100cwx	A4	Color	Printer (with IC card reader)
ECOSYS PA2100cx	A4	Color	Printer (with IC card reader)
ECOSYS MA2100cwf	A4	Color	Multifunction printer

ECOSYS Series	Paper size	Color/B&W	Device type
ECOSYS MA2100cfx	A4	Color	Multifunction printer
ECOSYS MA2100cx	A4	Color	Multifunction printer
ECOSYS MA2600cfx	A4	Color	Multifunction printer
ECOSYS M4125idn	A4	B&W	Multifunction printer
ECOSYS M4132idn	A4	B&W	Multifunction printer
ECOSYS MA4500fx	A4	B&W	Multifunction printer
ECOSYS MA4500ifx	A4	B&W	Multifunction printer
ECOSYS MA4500ix	A4	B&W	Multifunction printer
ECOSYS MA4500x	A4	B&W	Multifunction printer
ECOSYS MA5500ifx	A4	B&W	Multifunction printer
ECOSYS MA6000ifx	A4	B&W	Multifunction printer
ECOSYS P40045x	A4	B&W	Printer
ECOSYS P40050x	A4	B&W	Printer
ECOSYS PA4500x	A4	B&W	Printer
ECOSYS PA5000x	A4	B&W	Printer
ECOSYS PA5500x	A4	B&W	Printer
ECOSYS PA6000x	A4	B&W	Printer

ECOSYS Series	Paper size	Color/B&W	Device type
ECOSYS VFM3501cifx	A4	Color	Multifunction printer
ECOSYS VFM4001cifx	A4	Color	Multifunction printer
ECOSYS VFP3501cx	A4	Color	Printer
ECOSYS VFP4001cx	A4	Color	Printer
ECOSYS VFP4501cx	A4	Color	Printer
TASKalfa Series	Paper size	Color/B&W	Device type
TASKalfa 255	A4	B&W	Multifunction printer
TASKalfa 2470ci	A4	Color	Multifunction printer
TASKalfa 256i	A4	B&W	Multifunction printer
TASKalfa 2520i	A4	B&W	Multifunction printer
TASKalfa 300i	A4	B&W	Multifunction printer
TASKalfa 305	A4	B&W	Multifunction printer
TASKalfa 306i	A4	B&W	Multifunction printer

TASKalfa Series	Paper size	Color/B&W	Device type
TASKalfa 420i	A4	B&W	Multifunction printer
TASKalfa 520i	A4	B&W	Multifunction printer
TASKalfa 206ci	A4	Color	Multifunction printer
TASKalfa 205c	A4	Color	Multifunction printer
TASKalfa 250ci	A4	Color	Multifunction printer
TASKalfa 255c	A4	Color	Multifunction printer
TASKalfa 2553ci	A4	Color	Multifunction printer
TASKalfa 2554ci	A4	Color	Multifunction printer
TASKalfa 256ci	A4	Color	Multifunction printer
TASKalfa 265ci	A4	Color	Multifunction printer
TASKalfa 266ci	A4	Color	Multifunction printer
TASKalfa 300ci	A4	Color	Multifunction printer
TASKalfa 306ci	A4	Color	Multifunction printer

TASKalfa Series	Paper size	Color/B&W	Device type
TASKalfa 308ci	A4	Color	Multifunction printer
TASKalfa 351ci	A4	Color	Multifunction printer
TASKalfa 352ci	A4	Color	Multifunction printer
TASKalfa 356ci	A4	Color	Multifunction printer
TASKalfa 358ci	A4	Color	Multifunction printer
TASKalfa 400ci	A4	Color	Multifunction printer
TASKalfa 406ci	A4	Color	Multifunction printer
TASKalfa 408ci	A4	Color	Multifunction printer
TASKalfa 500ci	A4	Color	Multifunction printer
TASKalfa 508ci	A4	Color	Multifunction printer
TASKalfa 552ci	A4	Color	Multifunction printer
TASKalfa 2510i	A3	B&W	Multifunction printer
TASKalfa 3010i	A3	B&W	Multifunction printer

TASKalfa Series	Paper size	Color/B&W	Device type
TASKalfa 3011i	A3	B&W	Multifunction printer
TASKalfa 3500i	A3	B&W	Multifunction printer
TASKalfa 3501i	A3	B&W	Multifunction printer
TASKalfa 3510i	A3	B&W	Multifunction printer
TASKalfa 3511i	A3	B&W	Multifunction printer
TASKalfa 4002i	A3	B&W	Multifunction printer
TASKalfa 4003i	A3	B&W	Multifunction printer
TASKalfa 4004i	A3	B&W	Multifunction printer
TASKalfa 4020i	A3	B&W	Multifunction printer
TASKalfa 4500i	A3	B&W	Multifunction printer
TASKalfa 4501i	A3	B&W	Multifunction printer
TASKalfa 5002i	A3	B&W	Multifunction printer
TASKalfa 5003i	A3	B&W	Multifunction printer

TASKalfa Series	Paper size	Color/B&W	Device type
TASKalfa 5004i	A3	B&W	Multifunction printer
TASKalfa 5500i	A3	B&W	Multifunction printer
TASKalfa 5501i	A3	B&W	Multifunction printer
TASKalfa 6002i	A3	B&W	Multifunction printer
TASKalfa 6003i	A3	B&W	Multifunction printer
TASKalfa 6004i	A3	B&W	Multifunction printer
TASKalfa 6053ci	A3	Color	Multifunction printer
TASKalfa 6054ci	A3	Color	Multifunction printer
TASKalfa 6500i	A3	B&W	Multifunction printer
TASKalfa 6501i	A3	B&W	Multifunction printer
TASKalfa 7002i	A3	B&W	Multifunction printer
TASKalfa 7003i	A3	B&W	Multifunction printer
TASKalfa 7004i	A3	B&W	Multifunction printer

TASKalfa Series	Paper size	Color/B&W	Device type
TASKalfa 8000i	A3	B&W	Multifunction printer
TASKalfa 8001i	A3	B&W	Multifunction printer
TASKalfa 8002i	A3	B&W	Multifunction printer
TASKalfa 8003i	A3	B&W	Multifunction printer
TASKalfa 2550ci	A3	Color	Multifunction printer
TASKalfa 2551ci	A3	Color	Multifunction printer
TASKalfa 2552ci	A3	Color	Multifunction printer
TASKalfa 3050ci	A3	Color	Multifunction printer
TASKalfa 3051ci	A3	Color	Multifunction printer
TASKalfa 3060ci	A3	Color	Multifunction printer
TASKalfa 3252ci	A3	Color	Multifunction printer
TASKalfa 3253ci	A3	Color	Multifunction printer
TASKalfa 3550ci	A3	Color	Multifunction printer

TASKalfa Series	Paper size	Color/B&W	Device type
TASKalfa 3551ci	A3	Color	Multifunction printer
TASKalfa 3552ci	A3	Color	Multifunction printer
TASKalfa 3553ci	A3	Color	Multifunction printer
TASKalfa 3554ci	A3	Color	Multifunction printer
TASKalfa 4052ci	A3	Color	Multifunction printer
TASKalfa 4053ci	A3	Color	Multifunction printer
TASKalfa 4054ci	A3	Color	Multifunction printer
TASKalfa 4550ci	A3	Color	Multifunction printer
TASKalfa 4551ci	A3	Color	Multifunction printer
TASKalfa 5052ci	A3	Color	Multifunction printer
TASKalfa 5053ci	A3	Color	Multifunction printer
TASKalfa 5054ci	A3	Color	Multifunction printer
TASKalfa 5550ci	A3	Color	Multifunction printer

TASKalfa Series	Paper size	Color/B&W	Device type
TASKalfa 5551ci	A3	Color	Multifunction printer
TASKalfa 6052ci	A3	Color	Multifunction printer
TASKalfa 6550ci	A3	Color	Multifunction printer
TASKalfa 6551ci	A3	Color	Multifunction printer
TASKalfa 7052ci	A3	Color	Multifunction printer
TASKalfa 7054ci	A3	Color	Multifunction printer
TASKalfa 7353ci	A3	Color	Multifunction printer
TASKalfa 7550ci	A3	Color	Multifunction printer
TASKalfa 7551ci	A3	Color	Multifunction printer
TASKalfa 8052ci	A3	Color	Multifunction printer
TASKalfa 8353ci	A3	Color	Multifunction printer
TASKalfa 9002i	A3	B&W	Multifunction printer
TASKalfa 9003i	A3	B&W	Multifunction printer

TASKalfa Series	Paper size	Color/B&W	Device type
TASKalfa MA3500ci	A3	Color	Multifunction printer
TASKalfa MA4500ci	A3	Color	Multifunction printer
TASKalfa PA4500ci	A3	Color	Printer
TASKalfa 255b	A4	B&W	Multifunction printer
TASKalfa 2460ci	A4	Color	Multifunction printer
TASKalfa 307ci	A4	Color	Multifunction printer
TASKalfa 3212i	A4	B&W	Multifunction printer
TASKalfa 350ci	A4	Color	Multifunction printer
TASKalfa 4012i	A4	B&W	Multifunction printer
TASKalfa MZ10500i	A4	B&W	Multifunction printer
TASKalfa MZ3200i	A4	B&W	Multifunction printer
TASKalfa MZ4000i	A4	B&W	Multifunction printer
TASKalfa MZ7500ci	A4	Color	Multifunction printer

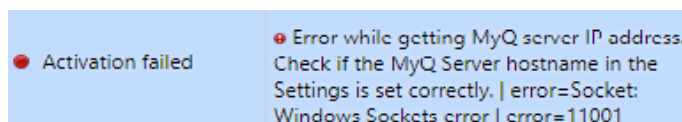
TASKalfa Series	Paper size	Color/B&W	Device type
TASKalfa MZ7500i	A4	B&W	Multifunction printer
TASKalfa MZ8500ci	A4	Color	Multifunction printer
TASKalfa MZ8500i	A4	B&W	Multifunction printer
TASKalfa MZ9500ci	A4	Color	Multifunction printer
TASKalfa MZ9500i	A4	B&W	Multifunction printer
TASKalfa VFM251ci	A4	Color	Multifunction printer
TASKalfa VFM351ci	A4	Color	Multifunction printer
TASKalfa VFM401ci	A4	Color	Multifunction printer
TASKalfa VFM501ci	A4	Color	Multifunction printer
TASKalfa VFM501i	A4	B&W	Multifunction printer
TASKalfa VFM601ci	A4	Color	Multifunction printer
TASKalfa VFM601i	A4	B&W	Multifunction printer

3 Installation

The easiest way to install the MyQ Kyocera Embedded Lite terminal is via remote installation from the MyQ web administrator interface. This method is very simple and it is preferable, especially when you need to install the terminal on a large number of printing devices, since you can install multiple devices in a batch.

You do this by creating separate printer discoveries and adding a configuration profile to any one of them. At the same time, you can assign the discovered printers to a group and/or queue. Another possibility is to create a remote installation for just one printer and place it in a direct queue.

Before the installation, make sure that the server hostname/IP address in **MyQ, Settings, Network** is correct. If it's not, which could happen after a license update or upgrade, the remote setup will fail.



3.1 Remote installation via Printer Discovery

3.1.1 Creating a Printer Discovery

To create a printer discovery in the MyQ web administrator interface, go to **MyQ, Settings, Printer Discovery**. The Printer Discovery pane opens. Click **Add Discovery**. A new Printer Discovery pane opens on the right side of the screen. Fill out the top part of the pane, in the **General** tab:

- Make sure that printer discovery is **Enabled**.

- Type a **Description** of the printer discovery. This could be the name of a brand, a group, or a combination of printer settings, e.g. Color - Marketing.
- Select the **IP range** setting method: *Manual* or *CSV file*.
 - You can add multiple IP ranges by clicking **+Add**.
 - Selecting the CSV file option opens a field box where you can browse for and add your CSV file.
- Click **Exclude** and enter an IP address you want to exclude from the discovery. Click **+Add** to exclude more.
- **Save the printer address as** either an *IP address*, *Hostname* or *FQDN*.
- If **Initiated by terminal** is checked, when an embedded terminal connects to MyQ and there is no printer with the same IP address, MyQ will execute a Printer Discovery whose IP address range matches the IP address of that terminal.

In the **Printers name template** section, select whether you want to **Set printer name by** *Name template* or *CSV*.

Printers name template

Set printer name by: * ☒ Name template ☐ CSV file

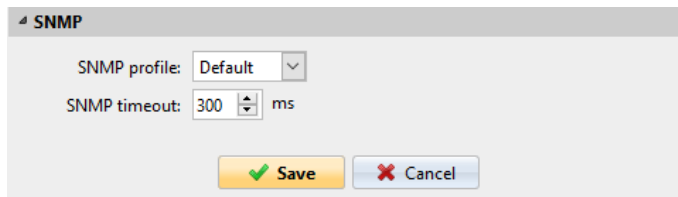
Name template: *

Parameters: %model%, %ipByte4%, %sn%, %id%, %hostname%, %snmpHostname%, %FQDN%

Selecting the *CSV* option opens a field box where you can browse for and add your CSV file. If you select the *Name template* option, you can use the following parameters:

Parameter	Description
%model%	Printer model read via SNMP.
%ipByte4%	The last (fourth) part of the printer's IP address.
%sn%	Serial number of the printer read via SNMP.
%id%	MyQ ID of the printer.
%hostname%	Printer hostname learned via a reverse DNS lookup. This is the hostname without the domain part.
%snmpHostname%	Printer hostname read via SNMP.
%FQDN%	Fully Qualified Domain Name of the printer.

In the **SNMP** section, select the SNMP profile from the drop-down, and set the **SNMP timeout** in ms (300 by default).



The image shows a dialog box titled 'SNMP'. It contains two fields: 'SNMP profile:' with a dropdown menu showing 'Default', and 'SNMP timeout:' with a numeric input field showing '300' and a unit dropdown showing 'ms'. At the bottom, there are two buttons: 'Save' with a green checkmark icon and 'Cancel' with a red X icon.

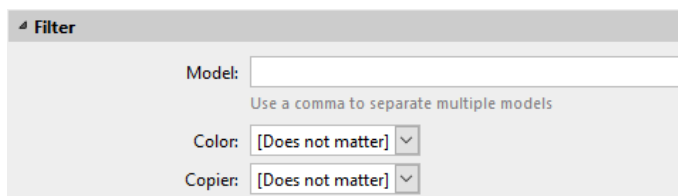
Once you set up the above, click **Save**. The newly created printer discovery appears in the printer discovery overview, in the middle of the window.

3.2 Configuring a Printer Discovery

After you have configured the general settings of the printer discovery, you can add an action to it, so when you run the printer discovery it will activate the printers and install the package on the terminal. A mandatory requirement for this action is that all the printers in the discovery should have the same administrator username and password for the administrator login.

Click the **Actions** tab in the printer discovery you have just saved. Click **+New action**. The name of the pane changes to **Actions** and it consists of three sections, **Filter**, **Every run actions**, and **First run actions**.

3.2.1 Filter section



The image shows a dialog box titled 'Filter'. It contains three fields: 'Model:' with a text input field, 'Color:' with a dropdown menu showing '[Does not matter]', and 'Copier:' with a dropdown menu showing '[Does not matter]'. Below the 'Model:' field, there is a small text label: 'Use a comma to separate multiple models'.

- **Model** - Type the device's model. You can add multiple models separated by comma (,).
- **Color** - Select the color setting from the drop-down: *Does not matter*, *Yes*, *No*.
- **Copier** - Select the copier setting from the drop-down: *Does not matter*, *Yes*, *No*.

3.2.2 Every run actions

These actions will be executed according to the schedule you have set for this printer discovery.

Every run actions

Add to queue:

Set configuration profile:

Add printer to group:

Remove current groups: ☐

Location:

Parameters: %location%

- Select a queue from the **Add to queue** drop-down, if you want to have all the printers stored in one queue.
- **Set configuration profile** by selecting one from the drop-down, or click **+Add new...** to add a new configuration profile (described in detail in Configuration Profiles).
- Select a group in the **Add printer to group** drop-down list, if you want to store all your printers in one group.
- Check the **Remove current groups** box, if you want to delete all the groups currently set to the printer.
- Set a **Location** parameter. The location is read from the SNMP profile.

3.2.3 First run actions

This section contains specific printer discovery settings for just one printer, but it also gives you the option to **Activate** all the discovered printers.

First run actions

Activate: ☐

Create direct queue: ☐

Copy settings from the queue:

Print test page: ☐


Print as:

Windows printer Expand


- Check **Activate** to activate all the discovered printers during the first run. Even if you don't check this box, you will be able to select the printers manually in the **Printers** overview and activate them.
- Check **Create direct queue** if you want to create a queue for just one printer. Checking this option activates all the options below.
 - Select a queue from the drop-down in the **Copy settings from the queue** field.
 - Check **Print test page** and then select a user from the **Print as** drop-down.
- Click the arrow next to **Windows printer** to expand the section.


Windows printer



Install Windows printer: ☐

Full path of a file with the printer driver: 

INF file

Printer model: 

Full path of a file with the driver settings: 

- Check the box next to **Install Windows printer**. The rest of the parameters become available, where you can browse for the printer driver, the driver settings and the printer model.
- Click **Save**.

Click **Run** to start the printer discovery (and activation if you have set it). You can see the progress in the yellow toolbar.

3.2.4 Configuration Profiles

Configuration profiles are profiles you can create and attach to your printer discovery, that contain essential information about your terminals installation and settings.

You can create a new configuration profile in two places:

- Go to **MyQ, Settings, Configuration Profiles** and click **+Add**.
- When you are creating or configuring your printer discovery, in the configuration profile drop-down, click **+Add new....**

Both ways open a new configuration profile pane on the right side of the screen.

New Config Profile

General Printers

Name: * New Config Profile

Price list:

Fax module: ☐

Terminal

Terminal type: * None

[Install terminal package](#)

Printer Credentials

These credentials are used to configure the printer. You can override these defaults in the properties of each printer.

Administrator user name:

Administrator password:

Network

SNMP profile: Default

MyQ server address: * IP address

☐ Set up IP filters

Save Cancel

- Enter a **Name** for the configuration profile.
- Select a **Price list** from the drop-down. For further information, check *Price List* in the *MyQ Print Server* guide.
- Check the **Fax module** checkbox if you can and want to use it. Otherwise, leave it unchecked (default).
- Select a **Terminal type** (*Embedded Lite*) from the drop-down. If the type you want is not listed, install the terminal package first (details in the next step) and then the correct type will be available on the drop-down menu.

Terminal

Terminal type: *

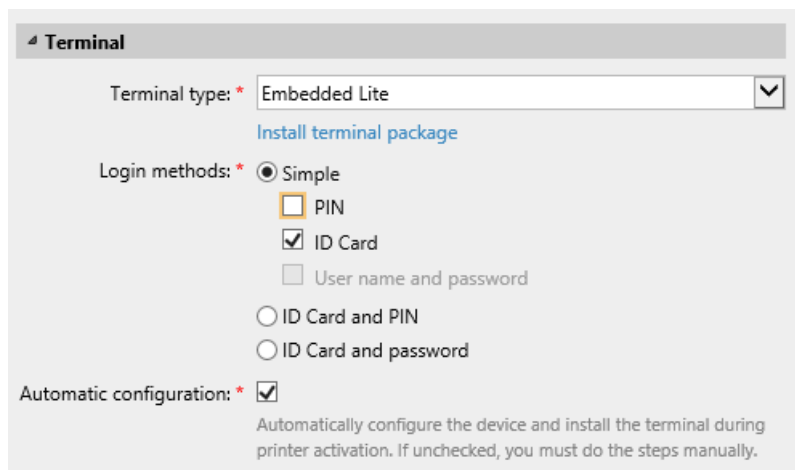
- None
- Built-in
- Embedded Lite
- HW-11-T
- Felica Reader
- Android Terminal
- MyQ TerminalPro / TCPCONV2 / NET2USB Converter V2
- MyQ TerminalPro / TCPCONV2 / NET2USB Converter V2 + Touch Panel

Printer Credentials

These credentials are used to

Administrator user name:

- Click **Install terminal package**.
- Click **Browse** to search for the **.pkg* file, select it and click **Open**. If you want to set a specific port, check the **Advanced settings** checkbox and set the port.
- Click **OK** to upload the installation package.
- Once *Embedded Lite* is selected as the **Terminal type**, **Login methods** become visible.



Terminal

Terminal type: * Embedded Lite ▼

[Install terminal package](#)

Login methods: * ☒ Simple

☐ PIN

☒ ID Card

☐ User name and password

☐ ID Card and PIN

☐ ID Card and password

Automatic configuration: * ☒

Automatically configure the device and install the terminal during printer activation. If unchecked, you must do the steps manually.

You can choose between two types of login: simple login and two- step authentication. With the simple login option, you can select up to three methods of login, and with the two-step authentication, you can select from two combinations of the login methods. The **Login methods** are:

- *PIN* - Users can log in by entering their MyQ PIN.
- *ID Card* - Users can log in by swiping their ID Card. The ID Card has to be registered on the user's account on the terminal.
- *User name and password* - Users can log in by entering their MyQ username and password.
- *ID Card and PIN* - Users have to swipe their ID card, and then enter their MyQ PIN.
- *ID card and password* - Users have to swipe their ID card, and then enter their password.
- In the **Copier operation panel idle time** field, add a number between 1 and 86400 to set how many idle seconds it will take the panel to automatically log a user out.
- Check the **Automatic configuration** checkbox, so that every new device is automatically configured and the terminal package is installed to it, when activated. If left unchecked, you would need to do these steps manually.
- In the **Advanced** options section you can:
 - Set a **Local administration PIN**. This PIN is used for logging in to the terminal's administration screen. Leave it empty to use the terminal's default.
 - Check the **Language selection** checkbox, if you want to give the users the ability to change the screen language when they log in to the terminal.
 - Check the **Display numeric keypad** checkbox, if you want a numeric keypad to be visible in the terminal's login screen.
 - Choose your **ID Card reader type** from *internal* or *external*. An internal card reader is directly connected to the printer. An external one communicates with the server over ethernet.
- Continue with entering the **Administrator user name** and **Administrator password** in the **Printer Credentials** section. They must apply to all the printers in the discovery. If these are left empty or entered incorrectly, the applied actions will fail.

- In the **Network** section:
 - Select an **SNMP profile**.
 - You can change the MyQ server address setting on the embedded terminal. By default, the terminal communicates with the MyQ server using the server's IP address. If you want to use hostname instead, select the **Hostname:..** option. This is set on the MyQ **Network** settings tab, under **General**.
 - Select **Set up IP filters** if you want to receive print jobs only from the MyQ server. With this option selected, a new IP filter is created on the printing device. The filter denies print jobs sent via LPD, Raw and IPP protocols from other than MyQ server IP addresses.

IP Filters (IPv4)

Filter 1

*IP Address(IPv4) :

*Subnet Mask :

*Protocols :

<input checked="" type="checkbox"/> LPD	<input type="checkbox"/> FTP
<input checked="" type="checkbox"/> IPP	<input type="checkbox"/> IPP over SSL
<input type="checkbox"/> HTTP	<input type="checkbox"/> HTTPS
<input checked="" type="checkbox"/> Raw	<input type="checkbox"/> SNMP

- Click **Save**. Your **Configuration Profile** is now ready and can be attached to a **Printer Discovery** and/or to selected printers.

3.3 Additional Settings

The following settings (available on the printing device web UI) are changed within the remote setup of the printing device:

Setting	Value
JOB_AUTHORIZATION_MODE	ON
SERVER_AUTHENTICATION_MODE	NETWORK
SERVER_HOSTNAME	MyQ server address
SERVER_PORTNUMBER	PM Server authentication port (Settings > Network)

Setting	Value
JOB_ACCOUNTING	ON
AUTO_PANEL_RESET	OFF
CERTIFICATE_VERIFICATION	ON, if a custom certificate is installed. OFF, if the default certificate is installed
UNKNOWN_ID_JOB	ON
SECURE_PROTOCOLS_SSL	ON
SECURE_PROTOCOLS_HTTP_SECURITY	ON
SECURE_PROTOCOLS_IPP_SECURITY	ON
IPP_SECURITY	ON
IPP_SECURITY_PORT	443
IP4_FILTERS	MyQ server address 255.255.255.255 LPD IPP IPPS RAW_PORT
SMTP_PROTOCOLS	ON
SMTP_SERVER_NAME	MyQ server address
SMTP_PORT_NUMBER	MyQ STMP port (Settings > Network)
SMTP_AUTHENTICATION_PROTOCOL	OFF
SMTP_SECURITY	OFF, if Enable only secure connection is disabled in MyQ. STARTTLS, if Enable only secure connection is enabled in MyQ.
SMTP_SERVER_TIMEOUT	config.ini > [SMTPServer] > timeout

Setting	Value
SMTP_EMAIL_SIZE_LIMIT	config.ini > [SMTPServer] > maxMessageSize
SMTP_SENDER_ADDRESS	device@myq.local
SLEEP RULE: NETWORK	OFF (On Kyocera devices supporting this setting)
SLEEP RULE: APPLICATION	OFF (On Kyocera devices supporting this setting)

3.4 Manual Installation

On printing devices that do not support remote installation, you can manually install the terminal by changing multiple settings on the device's Web UI.

To manually install the terminal, you have to add links to MyQ Server, and enable some specific terminal functions.



On devices that support remote installation, you should always use the method described in [Installation](#).



It is strongly recommended you return the printing device's Web UI settings to the default mode before you proceed with the manual installation. Changes to particular settings on the device Web UI may cause conflicts with some of the terminal's functions.

3.4.1 Change Job Accounting Settings

1. Go to the printing device Web UI (http://*IP Address of the device*). At the upper-left corner, enter administrator credentials, and then click **Login**.
2. On the panel at the left side of the Web UI, under **Management Settings**, click **Job Accounting**. The Job Accounting Settings tab opens.
3. On the tab, click **Settings**, and then set **Job Accounting** to *On*, and **Job Accounting Access** to *Network*.

Job Accounting Settings

Job Accounting : ☒ On ☐ Off

Job Accounting Access : ☐ Local ☒ Network

Note :

To select [Network], network authentication must be enabled and [Ext.] must be selected for server type.

- Under **Action Settings**, set the **Unknown ID Job** setting to *Permit*.

Action Settings

Apply Limit :

Copy/Printer Count : ☐ Total ☒ Individual

Unknown ID Job : ☒ Permit ☐ Reject

- Click **Submit** at the bottom of the tab.

3.4.2 Change Authentication Settings

- On the panel at the left side of the Web UI, under **Management Settings**, click **Authentication**. The Authentication Settings tab opens.
- On the tab, click **Settings**, and then, under **General**, set **Authentication** to *Network Authentication*. Additional authentication options appear on the tab.

Authentication Settings

General

Authentication :

- Under **Network Authentication Server**, set **Host Name** to the *IP Address of your MyQ Server*, set **Server Type** to *Ext.*, and then set **Port Number** to the *number of the authentication port used by Kyocera Provider*.

Network Authentication Server

Host Name :

Port Number : (1 - 65535)

Server Type :

Default Domain :

- Click **Submit** at the bottom of the tab.

3.4.3 Change Protocol Settings

1. On the panel at the left side of the Web UI, under **Network Settings**, click **Protocol**. The Protocol Settings tab opens.
2. On the tab, under **Send Protocols**, set **SMTP** to *On*, and if the **Enable only secure connection option** is enabled in MyQ, change the **SMTP Security** option to *STARTTLS*.

Send Protocols

SMTP (E-mail TX) : ☒ On ☐ Off

Note : For more settings, click here. [E-mail Settings](#)

SMTP Security : Off ▼

Note : To use these settings, enable SSL. [Network Security](#)

3. Click **Submit** at the bottom of the tab, and then restart the printing device and the Web UI.

3.4.4 Change Email Settings

1. After the restart, go to the printing device Web UI (*http://*IP Address of the device**). At the upper-left corner, enter administrator credentials, and then click **Login**.
2. On the panel at the left side of the Web UI, under **SMTP**, set **SMTP Server Name** to the *IP Address of your MyQ Server*.

E-mail Send Settings

E-mail Size Limit : 0 KB

Sender Address : device@MyQ.local

Signature :

 %printer
 [%etheraddr]

Function Default : Note : Change the default settings by following this link. [Common/Job Defaults](#)

Submit
Reset

3. Under **E-mail Send Settings**, set **Sender Address** to *device@MyQ.local*, and then click **Submit** at the bottom of the tab.

3.4.5 Change Network Security Settings

1. On the panel at the left side of the Web UI, under **Security Settings**, click **Network Security**. The Network Security Settings tab opens.

- On the tab, under **Network Security Settings**, set **HTTP Security** to *Secure Only (HTTPS)*, then set **IPP Security** to *Secure Only (IPPS)*, and lastly set **Certificate Verification** to *Off*.

Network Security Settings

*SSL : ☒ On ☐ Off

*HTTP Security : ☒ Secure Only (HTTPS) ☐ Not Secure (HTTPS & HTTP)

*IPP Security : ☒ Secure Only (IPPS) ☐ Not Secure (IPPS & IPP)

Hash : ☒ SHA1 ☐ SHA2(256/384)

Certificate Verification : ☐ On ☒ Off

- Click **Submit** at the bottom of the tab, restart the printing device, and leave the Web UI.

The terminal is installed and you need to attach it to the printing device on the MyQ Web UI.

3.4.6 Assigning the Terminal to a Device

The terminal is automatically assigned within the remote installation on the MyQ web administrator interface, but if you perform the manual installation instead, you have to assign the terminal to the printing device on the device's properties panel on the **Printers** main tab, and select the login methods. You can also manually set automatic logout from user sessions.

Assign the Terminal

- Log on the MyQ web administrator interface.
- Open the **Printers** main tab (**MyQ, Printers**).
- On the tab, double-click the printing device that you want to set. Its properties panel opens on the right side of the screen.
- On the panel, under **Terminal type**, select the *Embedded Lite* terminal type option.
- Select login methods, and then click **Save**. In case the *Apply new settings* dialog box appears, deselect the **Remote Printer Setup** option, and then click **OK**, to submit the changes without remote setup.

Login Methods

- **Simple** - You need to select one or both of the simple login options:

- **ID Card** - With the ID Card option selected, users can log in by swiping their ID Card. The ID Card has to be registered on the user account on the terminal. For more information about card readers configuration, see [USB Card Reader connection](#).
- **PIN** - With the PIN option selected, users can log in by entering their MyQ PIN. If you select this option, you need to make sure that it is set on the printing devices Web UI as well.
- **ID Card and password** - With the ID Card and password option selected, the user has to swipe their ID card, and then enter their password.
- **ID Card and PIN** - With the ID Card and PIN option selected, the user has to swipe their ID card, and then enter their PIN.

To set login methods on the device's Web UI

While all the login options are automatically set within the remote setup of the terminal, if you want to set them on terminals without the remote installation option, you need to manually change the settings on the printing device's Web UI.

Login by PIN

1. Go to the printing device Web UI (http://*IP Address of the device*). At the upper-left corner, enter administrator credentials, and then click **Login**.
2. Open the **Authentication** tab, under **Management Settings**.
3. Under **PIN Login Settings**, set **PIN Login** to *On*, and then click **Submit** at the bottom of the tab.

PIN Login Settings

PIN Login : ☒ On ☐ Off

Login by ID Card

1. Open the **ID Card** tab, under **Management Settings**.
2. Under **ID Card Settings**, set **Keyboard Login** to *Prohibit*, set **Additional Authentication** to *Off*, and then click **Submit** at the bottom of the tab.

ID Card Settings

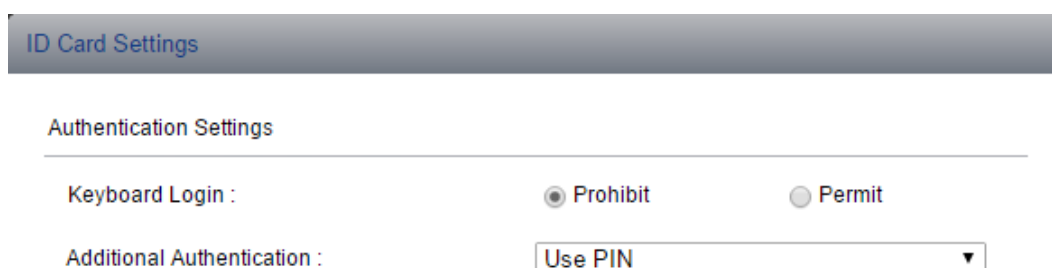
Authentication Settings

Keyboard Login : ☒ Prohibit ☐ Permit

Additional Authentication :

Login by ID Card and PIN

1. Open the **ID Card** tab, under **Management Settings**.
2. Under **ID Card Settings**, set **Keyboard Login** to *Prohibit*, set **Additional Authentication** to *Use PIN*, and then click **Submit** at the bottom of the tab.



ID Card Settings

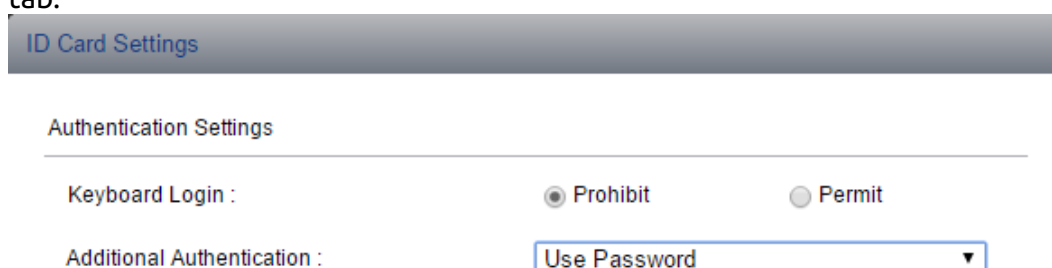
Authentication Settings

Keyboard Login : ☒ Prohibit ☐ Permit

Additional Authentication : Use PIN ▼

Login by ID Card and Password

1. Open the **ID Card** tab, under **Management Settings**.
2. Under **ID Card Settings**, set **Keyboard Login** to *Prohibit*, set **Additional Authentication** to *Use Password*, and then click **Submit** at the bottom of the tab.



ID Card Settings

Authentication Settings

Keyboard Login : ☒ Prohibit ☐ Permit

Additional Authentication : Use Password ▼

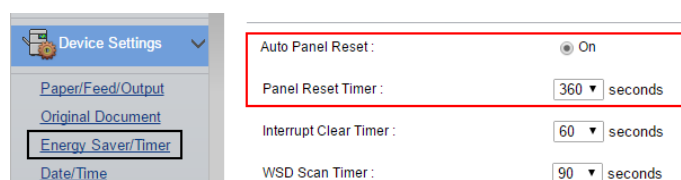
i The available login methods depend on the device type. Please contact your Kyocera Provider or MyQ Support for further information.

3.4.7 Automatic Logout

On printing devices that support the remote setup, the user sessions' timeout is automatically changed according to the value of the **Copier operation panel idle time** setting on the MyQ Server. On printing devices without the remote setup option, you can manually change it on the printing device Web UI.

To manually set the idle timeout:

1. Go to the printing device Web UI (http://*IP Address of the device*). At the upper-left corner, enter administrator credentials, and then click **Login**.
2. Open the **Energy Saver/Timer** tab, and set **Auto Panel Reset** to *On*.
3. Set **Panel Reset Timer** to the value that you want to use (in seconds).
4. Click **Submit** at the bottom of the tab.



Device Settings ▼

- [Paper/Feed/Output](#)
- [Original Document](#)
- [Energy Saver/Timer](#)**
- [Date/Time](#)

Auto Panel Reset : ☒ On

Panel Reset Timer : 360 ▼ seconds

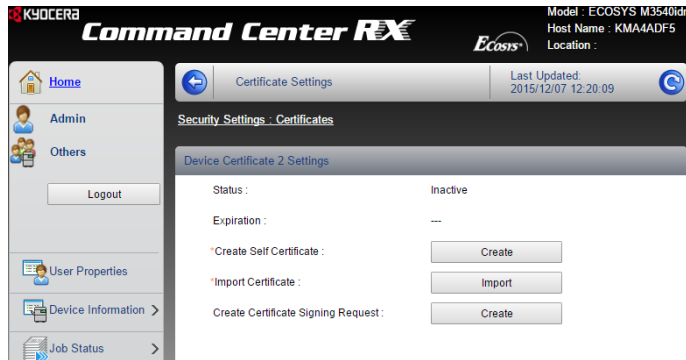
Interrupt Clear Timer : 60 ▼ seconds

WSD Scan Timer : 90 ▼ seconds

3.5 Secure Run of the Terminal

An SSL certificate is a data file is necessary for secure network communication.

A default MyQ SSL certificate is part of the installation. If you want to use your own certificate, you have to upload it to two places: replace the default certificate in MyQ, and import the certificate in the security settings of the printing device web UI.



4 Licenses

The terminal requires an **Embedded Lite terminal** license, although you can use full Embedded terminal licenses instead. The total number of Kyocera Embedded Lite terminals that can run at the same time is equal to the number allowed by the Embedded Lite terminal licenses and Embedded terminal licenses counted together. If the total number of licenses (Embedded terminal + Embedded Lite terminal) at the server is exhausted, the terminal cannot be activated. In such cases, you can either add a new license or deactivate one of the currently activated terminals.

Each embedded license includes one-year support. You can extend the support period by assigning a support license to the particular main license.

For information on how to add the embedded terminal licenses, how to activate them, and how to extend the support period, see "Licenses" in the *MyQ Basic Installation Guide*.

5 Terminal Actions

Once a user logs in to the Kyocera Embedded Lite terminal, they are shown a slightly modified interface of the printing device, where they can perform standard print, copy or scan actions and, depending on the device model, some of the additional features of the Embedded Lite terminal: pull print, managing print jobs, and scanning directly to a user's MyQ folder or email.

5.1 Print actions

Depending on the printing device model, users are provided with one of the two versions of the pull print action: **Simple print** and **Advanced print**. With the **Simple** version, all print jobs that are in the ready state in MyQ are released immediately after the user logs in. The **Advanced** version enables users to further manage their jobs on the terminal.

- **Simple print** - After a user logs in, all of their ready print jobs are immediately printed and no other print actions can be taken on the terminal.
- **Advanced print** - After a user logs in, a dialog box with two print options — **All Print** and **Select Documents** — appears on the printing device's screen.
 - **All Print** - If a user selects the **All Print** option, all of their ready print jobs are immediately printed.
 - **Select Documents** - If a user selects the **Select Documents** option, the **My Print** dialog box with advanced print options appears. In the box, users can select any number of documents, and then either print or delete them. The print and delete buttons appear after one or more jobs are selected on the screen.



The server option **Print all jobs after logging in** is not supported by Kyocera Embedded Lite terminals.

5.2 Scan actions

Scanning on the terminal works in the same way as scanning on the printing device's panel without the terminal, except for the **Send to Me** option, which enables users to scan directly to their MyQ folder or email.

Send to Me - If a user taps the **Send To Me** button, the outgoing scanned file is stored in the folder or email(s) set in the user properties panel on the **Users** main tab of the MyQ web administrator interface.

5.3 Copy actions

Copying on the terminal works in the same way as copying on the printing device's panel without the terminal.

5.4 Fax actions

Faxing on the terminal works in the same way as faxing on the printing device's panel without the terminal.

5.5 Logging out

Users can log out by tapping the **Logout** button, which is either part of the device's operation panel or it is displayed on the home screen of the printing device touch panel.

5.6 Adding and removing buttons from the Home screen

On Kyocera models that support home screen customization, you can add and remove buttons from the terminal's Home screen. For information if a particular model supports the feature, please see its Kyocera manual or ask your Kyocera provider.

To add or delete buttons from the Home screen, you need to log in to the printing device as an administrator, and customize the screen.

1. When the device is in the ready status (no users are logged in), press **System Menu / Counter** on the printing device's panel. The **Keyboard Login** button appears on the screen.
2. Tap **Keyboard Login** and log in by selecting **Local** and entering the device's admin credentials. The System menu screen opens (for information about the credentials, see the printing device's manual).
3. On the screen, tap **Home**. The Home dialog box appears.
4. In the dialog box, tap **Customize Desktop: Change**. The Home - Customize Desktop dialog box appears.
5. In the dialog box, you can see the current layout of the Home screen. To add or remove a button from the screen, tap **Add** or **Delete**, select the button that you want to add or remove, and then submit the selection.

6 Credit

With credit accounting activated, users must have a sufficient amount of credit on their account to be allowed to print, copy, and scan.


For more information about credit accounting, see **Credit** in the *MyQ Basic Installation Guide*.

Using terminal actions with activated credit accounting

Print jobs received with the job parser activated include additional information, such as number of pages, color, and price. Users are not able to release print jobs to which they do not have sufficient credit, and cannot use the **All Print** action as long as the overall price of all priced print jobs is higher than their credit.

If a user logs in to the terminal with an insufficient amount of credit, they cannot copy or scan.

If a user logs in to the terminal with a sufficient amount of credit to copy/scan at least one page, they can copy/scan an unlimited number of pages within the session. After the user logs out, all copy and scan jobs are accounted and the state of credit is updated on the server.

-  Kyocera devices have the option to account Single color copies either as Single color copies or Full color copies in their settings. However, when using MyQ:
- Kyocera Embedded Terminals will always charge credit for Single color copies as Single-color copies Price List item.
 - Kyocera Lite Embedded Terminals will always account Single color copies according to the machine settings.
 - Printer counters are increased based on the machine settings, for both terminals.
 - We recommend setting up the machines to use the Single color accounting method.

7 Quota

With the quota feature activated, users cannot print, copy or scan after they reach or exceed their quota limit. They can view their current quotas on their session on the embedded terminal.

For further information about quotas, see **Quota** in the *MyQ Basic Installation Guide*.

Using terminal actions with activated quotas

Print jobs received with the job parser activated include additional information, such as number of pages, color, and price. Users are not able to release print jobs that would reach or exceed any of their print quotas and cannot use the **All Print** action as long as the overall number of pages is higher than the remaining number of pages allowed by any of their print quotas. Users that log in to the terminal with any of their copy/scan quota reached, cannot copy/scan.

If a user logs in to the terminal with no copy/scan quotas reached, they can copy and scan an unlimited number of pages within the session. After the user logs out, all copy and scan jobs are accounted and the quotas are updated on the server.



Project Accounting is not supported in Kyocera Embedded Lite terminals. For example, if you assign your jobs to projects via MyQ Desktop Client, or you have the projects preselected in your setup, those jobs will be accounted as *Without Project* if they are printed on a Kyocera Embedded Lite printer.

8 USB Card Reader connection

To enable the use of a USB card reader on a printing device, the Kyocera Card Authentication Kit (B) has to be activated on the printing device. The Kyocera Card Authentication Kit (B) is an optional plugin for all Kyocera printing devices based on HyPAS technology. If it is enabled and a supported card reader is connected to the USB slot, MyQ can read data acquired by the reader and use them for user identification.

For a full unlimited version of CAK(B) ask your Kyocera supplier.

You can run the kit in a demo mode with the functionality limited to 30 days; the demo can be executed 3 times on each device.



If the CAK(B) is enabled, but no compatible reader is connected to the USB slot, the *ID card reader not connected* permanent error message is displayed on the panel.

To activate the Card Authentication Kit (B):

1. On the upper-left corner of the device's physical board, press the **System Menu** button (or **System Menu/Counter** button on some devices). The System Menu opens.
2. Tap **System** (or **System/Network** on some devices). The System menu opens.
3. Tap **Optional Function**. The Optional Function menu opens.
4. Select **CARD AUTHENTICATION KIT** and tap **Activate** at the bottom-left corner of the screen. You are prompted to enter the license code for the application.
5. If you have the CAK(B) license code, enter it and confirm it. If you have no license code and just want to check the functionality, select **Trial**.

9 Uninstallation

MyQ embedded terminals can be uninstalled on the MyQ web administrator interface or by forcing a factory reset on the printing device.

In the first case, even if the terminal is uninstalled, all of the device settings can be preserved for future use, whereas after a device reset, all the settings are lost and the device returns to its default factory state.

To remotely uninstall an embedded terminal from the MyQ web administrator interface, go to **MyQ, Settings, Configuration Profiles**. Choose the profile and click **Edit** (or double-click, or right click and **Edit**). The properties panel opens on the right side. In the **General** tab, under **Terminal**, change the **Terminal type** to *None*. Click **Save**.

10 Change Log

- [Supported printing devices](#) list updated.
- [Remote installation](#) process updated.
- Warning about [Projects](#) added.

11 Business Contacts

MyQ® Manufacturer	<p>MyQ® spol. s r.o. Harfa Business Center, Ceskomoravska 2532/19b, 190 00 Prague 9, Czech Republic</p> <p>ID no. 615 06 133 MyQ® spol. s r.o. is registered in the Commercial Register at the Municipal Court in Prague, file no. C 29842 (hereinafter as "MyQ®")</p>
Business information	<p>http://www.myq-solution.com info@myq-solution.com</p>
Technical support	<p>support@myq-solution.com</p>
Notice	<p>MANUFACTURER WILL NOT BE LIABLE FOR ANY LOSS OR DAMAGE CAUSED BY INSTALLATION OR OPERATION OF THE SOFTWARE AND HARDWARE PARTS OF THE MyQ® PRINTING SOLUTION.</p> <p>This manual, its content, design and structure are protected by copyright. Copying or other reproduction of all or part of this guide, or any copyrightable subject matter without the prior written consent of MyQ® is prohibited and can be punishable.</p> <p>MyQ® is not responsible for the content of this manual, particularly regarding its integrity, currency and commercial occupancy. All the material published here is exclusively of informative character.</p> <p>This manual is subject to change without notification. MyQ® is not obliged to make these changes periodically nor announce them, and is not responsible for currently published information to be compatible with the latest version of the MyQ® printing solution.</p>
Trademarks	<p>"MyQ®", including its logos, is a registered trademark of MyQ®. Any use of trademarks of MyQ® including its logos without the prior written consent of MyQ® Company is prohibited. The trademark and product name are protected by MyQ® and/or its local affiliates.</p>