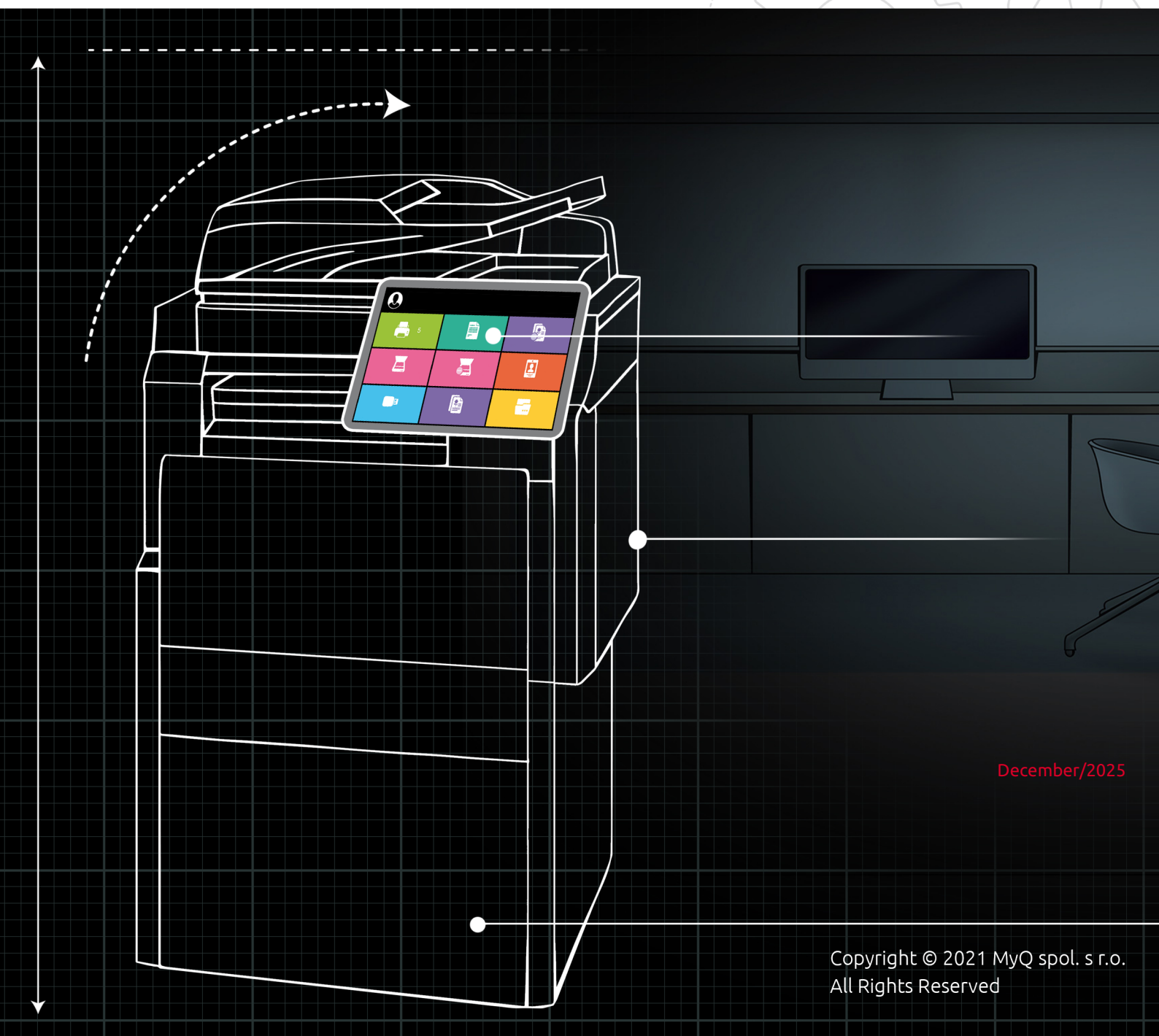


myQ X

MyQ Brother Embedded 10.2



December/2025

Copyright © 2021 MyQ spol. s r.o.
All Rights Reserved

Table of Contents

1	Supported Printing Devices	5
2	Installation.....	7
2.1	Requirements.....	7
2.2	Remote Installation via Printer Discovery.....	7
2.3	To remotely install the MyQ Brother Embedded Terminal:.....	7
2.4	Vendor-Specific Options: Brother.....	7
2.5	Changing login methods.....	8
2.6	Update and Uninstallation.....	9
2.6.1	Updating the terminal	9
2.6.2	Uninstalling the terminal	9
2.7	Manual Device Configuration	10
3	Terminal Features	16
3.1	Print All.....	16
3.2	Panel Scan	17

MyQ Brother Embedded Terminal 10.2 BETA

MyQ Brother Embedded Terminal 10.2 is a terminal using the BSI Platform of Brother devices. This terminal uses the native UI of Brother, as a result some features may be limited or adjusted to the platform.



MyQ X is still in development on Brother Terminals and features will be released in phases; this version has the following limitations:

- Easy actions are not supported.
- Direct Print is not supported.
- Credit, Quota, and Project accounting is not supported.
- If Credit, Quota, and Project accounting are enabled on the Server, Brother devices will not function.
- It is not possible to account jobs outside of the user session.
- All jobs are accounted once the user session has ended, not during the user session.
- The current accounting of paper formats will be altered in the next release.
- Brother devices can be added to MyQ via IP address only, not using a hostname.



- [\(10.2 BETA\) Release Notes](#)
- [Supported Printing Devices](#)
- [Installation](#)
 - [Manual Device Configuration](#)
- [Terminal Features](#)
- [\(10.2 BETA\) Guides in PDF](#)

1 Supported Printing Devices

Some models are not certified yet. A list of certified models can be found in **Certified Devices** on the [MyQ Community portal](#). If the requested device is not on the certified devices list but it is in the table below, please create a Device certification request.

- MFC-J5955DW
- MFC-J6955DW
- MFC-J6957DW
- MFC-J6959DW
- MFC-J7500CDW
- MFC-J7600CDW
- MFC-J7700CDW
- MFC-L5710DN
- MFC-L5710DW
- MFC-L5715DN
- MFC-L5715DW
- MFC-L5717DW
- MFC-L5718DN
- MFC-L5728DW
- MFC-L5912DW
- MFC-L5915DW
- MFC-L6710DW
- MFC-L6720DW
- MFC-L6810DW
- MFC-L6820DW
- MFC-L6910DN
- MFC-L6912DW
- MFC-L6915DN
- MFC-L6915DW
- MFC-EX910
- MFC-EX915DW
- MFC-L3780CDW
- MFC-L8340CDW
- MFC-L8390CDW
- MFC-L8395CDW
- MFC-L8730CDW
- MFC-L8930CDW
- MFC-L8970CDW
- MFC-EX570
- MFC-EX575
- MFC-L9610CDN
- MFC-L9630CDN
- MFC-L9635CDN
- MFC-L9670CDN
- MFC-EX670
- MFC-EX670W
- HL-J6010DW
- HL-J7010CDW

- HL-L6310DW
- HL-L6410DN
- HL-L6412DW
- HL-L6415DN
- HL-L6415DW
- HL-L6415DWT
- HL-L6418DW
- HL-EX415DW
- HL-L3295CDW
- HL-L8230CDW
- HL-L8240CDW
- HL-L8245CDW
- HL-L8430CDW
- HL-L8430CDWT
- HL-L8570CDW
- HL-L9410CDN
- HL-L9430CDN
- HL-L9470CDN
- HL-EX470W
- DCP-L5510DW
- DCP-L5510DN
- DCP-L5512DN
- DCP-L5518DN
- DCP-L5610DN
- DCP-L5660DN
- DCP-L5662DN
- DCP-L8630CDW
- DCP-B7650DW
- ADS-4700W
- ADS-4900W
- MFC-EX570
- MFC-EX575
- MFC-EX670
- MFC-EX670W
- HL-EX415DW
- HL-EX470W

2 Installation

2.1 Requirements

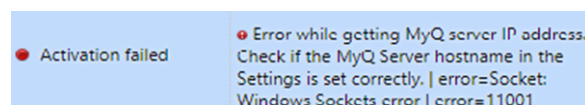
- Device must support BSI and be on the Supported Devices list.
- BSI must be enabled on the device.
- MyQ Brother Embedded terminal 10.2 is supported by MyQ Print server 10.2+, the latest version is recommended.

2.2 Remote Installation via Printer Discovery

The easiest way to install the MyQ Brother Embedded terminal is via remote installation from the MyQ Web administrator interface. This method is simple and is preferable, if you need to install the terminal on a large number of printing devices you can install multiple devices in a batch.

You do this by creating separate printer discoveries and adding a configuration profile to any one of them. Additionally, you can assign the discovered printers to a group and/or queue.

Before installation, make sure that the server hostname/IP address in **MyQ > Settings > Network** is correct. If it's not, often due to a license update or upgrade, remote setup will fail.



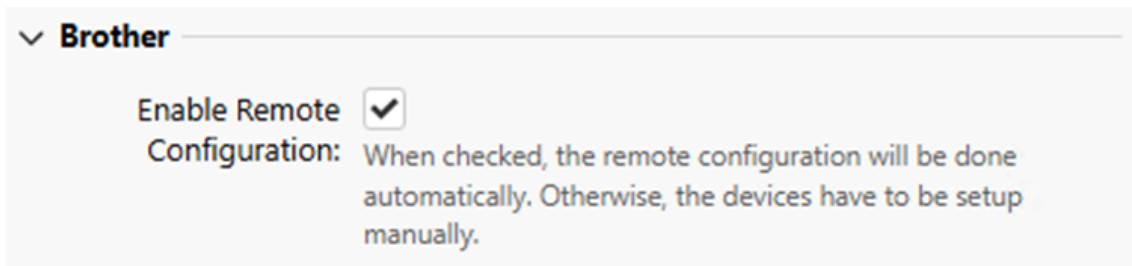
2.3 To remotely install the MyQ Brother Embedded Terminal:

1. Follow the instructions in the MyQ Print Server guide to [create and configure a Printer Discovery](#).
2. Next, [create a configuration profile](#) to attach to your Printer Discovery.
3. The **Brother** section is displayed if the Brother terminal package is installed on the MyQ server.

2.4 Vendor-Specific Options: Brother

After you install the terminal package on the Print Server, the following vendor-specific option is available in [Configuration Profiles](#):

- **Enable Remote Configuration** - Configures the device automatically when remote configuration is completed. When disabled, the device is activated and the configuration of the device web UI must be completed manually via the steps in [Configure Device Manually](#). The default value is Enabled.



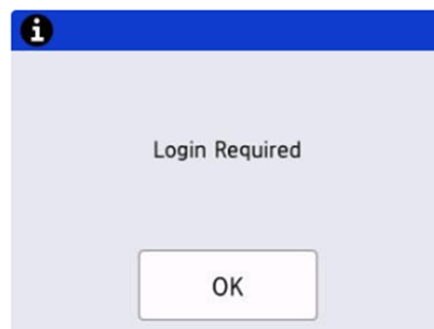
Applying changes on the terminal that were made in the **Brother** section requires a force remote configuration of the device.

2.5 Changing login methods

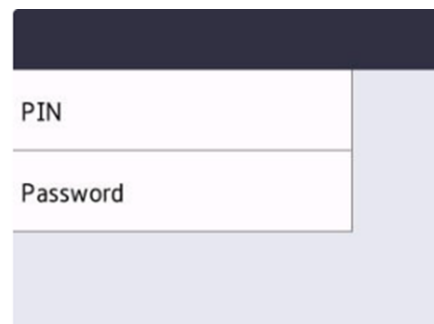
If you want to change login methods after the installation, you need to edit the configuration profile and reactivate your printer(s).

Currently the only supported login methods for Brother terminals are PIN or Username and password/PIN.

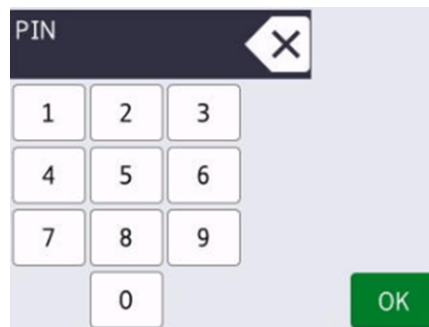
When **Login Portal** is enabled the device features can't be accessed without the user logging in first.



After clicking **OK**, the user can select one of the available login methods.



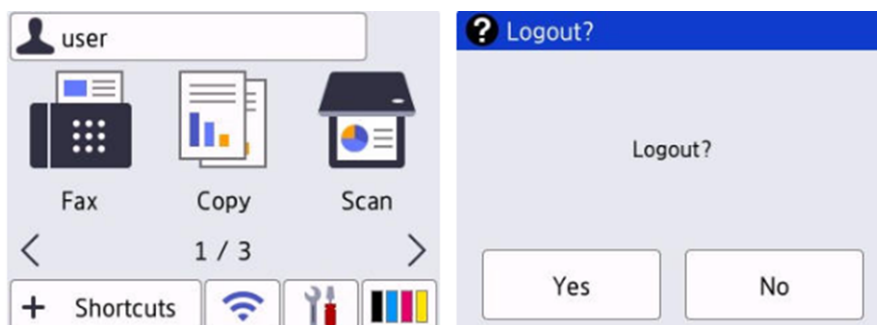
After selecting **PIN**, successful login results in opening of the Home Screen. Unsuccessful login results in a message informing the user with a back arrow to return to the initial login by PIN screen.



After selecting **Password**, successful login results in opening of the Home Screen. Unsuccessful login results in a message informing the user with a back arrow to return to the initial login by PIN screen.



Logout is initiated automatically or by clicking the username on the upper part of the screen and then clicking **Yes**.



2.6 Update and Uninstallation

2.6.1 Updating the terminal

The terminal package can be updated in the MyQ web administrator interface.

After an upgrade of the package, it is necessary to manually change the packageID of the terminal in the **Login**, **Logout** and **Menu1** settings in the device web UI for each device.

2.6.2 Uninstalling the terminal

You can remotely uninstall the embedded terminal from the MyQ web administrator interface. However, to perform the uninstallation, printer credentials must be

defined either in the printer properties in MyQ or within the **Configuration Profile** used during remote installation. Uninstallation without valid credentials is not possible.

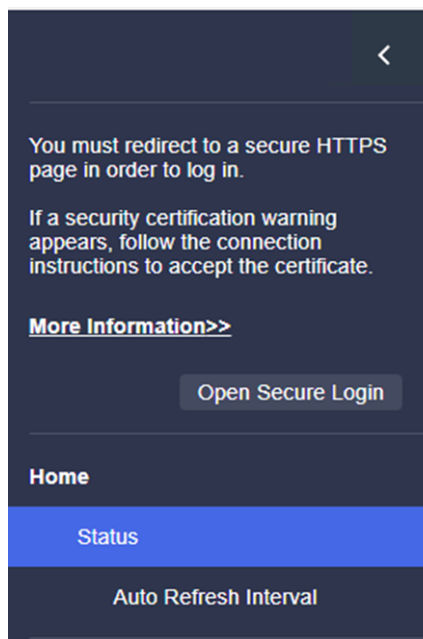
To remotely uninstall, go to **MyQ > Printers** and double-click on the printer. The properties panel opens on the right-hand side of the screen. In the **General** tab, under **Configuration**, change the **Configuration Profile** to *No Terminal*. Click **Save** and re-activate the printer.

After changing the Terminal type to *No Terminal* the settings in the device web UI are disabled. To delete the configuration of the device and force a factory reset or these manual steps are required:

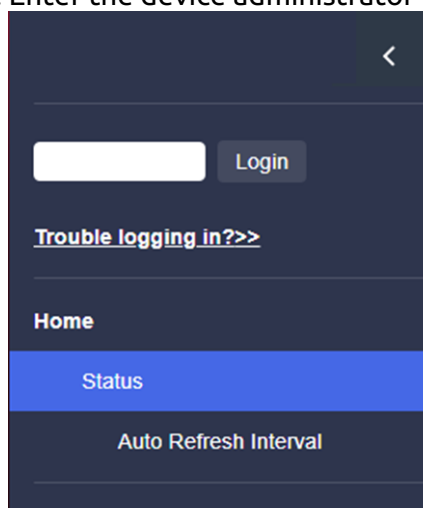
1. Go to the printer's web UI by accessing http://*IP address of the printer*/.
2. Select **Open Secure Login**.
3. Provide the device administrator password, and click **Login**.
4. Go to **Administrator > Solutions > Solutions Application Entry > Login**.
 - a. Delete **Application ID**.
 - b. Delete **URL**.
5. Go to **Administrator > Solutions > Solutions Application Entry > Logout**.
 - a. Delete **Application ID**.
 - b. Delete **URL**.
6. Go to **Administrator > Solutions > Solutions Application Entry > Menu1**.
 - a. Delete **Application ID**.
 - b. Delete **URL**.
7. Go to **Administrator > Solutions**.
 - a. Set **Solutions** to **Off**.
8. Go to **Network > Security > CA Certificate**.
 - a. Delete the CA certificate (use [ca-myq.crt](#) from the folder [C:\ProgramData\MyQ\Cert](#)).

2.7 Manual Device Configuration

1. Go to the printer's web UI at http://*IP address of the printer*/.
2. Select **Open Secure Login**.



3. Enter the device administrator password, and click **Login**.



4. Go to **Administrator > Solutions**.

Solutions

The Brother Solutions Interface (BSI) lets your machine connect to custom applications.

This is an advanced function for developers and solution providers. Turning this on without additional instruction from a solution provider can result in undesired operation.

Solutions

- ☐ Off
☒ On

Solutions Button Title

1st Line

MyQ

2nd Line

Login Portal

- ☐ Off
☒ On

Login Portal Message

Login Required

Auto print faxes when locked

- ☒ Off
☐ On

Screen displayed after Login

- ☐ Home Screen
☒ Solutions Menu

- a. Set **Solutions** to **On**.
 - b. Set **Solutions Button Title 1st Line** to **MyQ**.
 - c. Set **Login Portal** to **On**.
 - d. Set **Screen displayed after Login** to:
 - i. **Home screen** to display the Home screen after login.
 - ii. **Solutions Menu** to display the Print All button after login.
5. Go to **Administrator > Solutions > Solutions Application Entry > Login**.

Login

Application ID

Login

URL

https://serverAddress:serverPort/package/brother_packageID/api/login/init

Argument

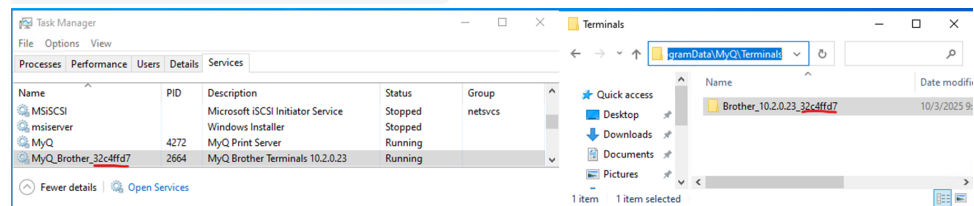
Cancel

Submit

- a. Set **Application ID** to **Login**.

- b. Set **URL** to **`https://serverAddress:serverPort/package/brother_packageID/api/login/init`** (for example **`https://10.14.17.152:8090/package/brother_32c4ffd7/api/login/init`**).
- The server address could be a hostname or IP address; in the case of an IP address the IP address has to be added in MyQ server Web UI > **Settings > Network > Certificates > Server alternative names**.
 - The package ID is a unique ID for the installed Brother package on the server, the ID changes after reinstallation of the package. You can find the package ID in Microsoft Task Manager or in the folder **C:**

`\ProgramData\MyQ\Terminals` .



- c. Leave **Argument** Empty.
6. Go to **Administrator > Solutions > Solutions Application Entry > Logout**.

Logout

Application ID

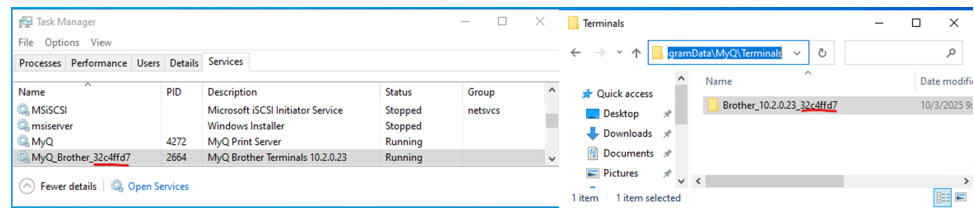
URL

Argument

- a. Set **Application ID** to **Logout**.
- b. Set **URL** to **`https://serverAddress:serverPort/package/brother_packageID/api/login/logout`** (for example **`https://10.14.17.152:8090/package/brother_32c4ffd7/api/login/logout`**).
- The server address could be a hostname or IP address; in the case of an IP address the IP address has to be added in MyQ server Web UI > **Settings > Network > Certificates > Server alternative names**.
 - The package ID is a unique ID for the installed Brother package on the server, the ID changes after reinstallation of the package. You can find

the package ID in Microsoft Task Manager or in the folder **C:**

\ProgramData\MyQ\Terminals .



c. Leave **Argument** Empty.

7. Go to **Administrator > Solutions > Solutions Application Entry > Menu1.**

Menu1

Application ID

Display Name

URL

Argument

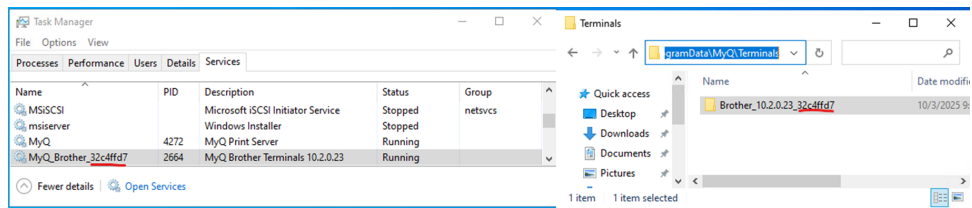
a. Set **Application ID** to **Menu**.

b. Set **Display Menu** to **MyQ**.

c. Set **URL** to **https://serverAddress:serverPort/package/brother_packageID/api/menu/actions** (for example **https://10.14.17.152:8090/package/brother_32c4ffd7/api/menu/actions**).

- i. The server address could be a hostname or IP address; in the case of an IP address the IP address has to be added in MyQ server Web UI > **Settings > Network > Certificates > Server alternative names**.
- ii. The package ID is a unique ID for the installed Brother package on the server, the ID changes after reinstallation of the package. You can find the package ID in Microsoft Task Manager or in the folder **C:**

\ProgramData\MyQ\Terminals .



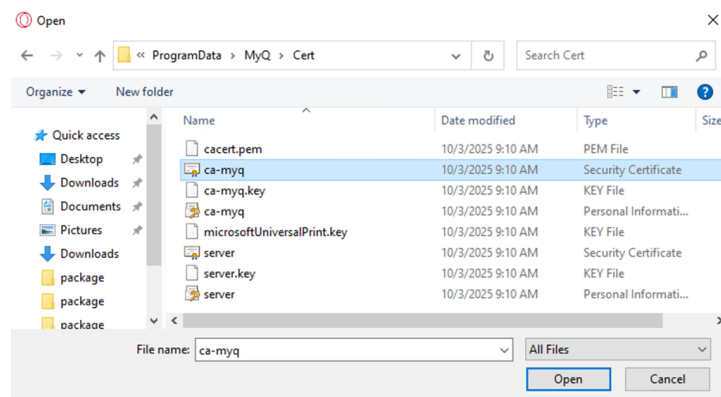
- d. Leave **Argument** Empty.
8. Go to **Network > Security > CA Certificate**.
- a. Import a **CA certificate** (use **ca-myq.crt** from the folder **C:\ProgramData\MyQ\Cert** .

CA Certificate ?

CA Certificate List

Certificate Name Issuer Validity Period(*:Expired)

[Import CA Certificate>>](#)



3 Terminal Features

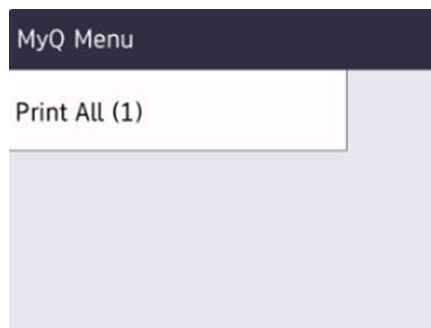
Currently there is only one Terminal action available on Brother Terminals, the **Print All** button.

3.1 Print All

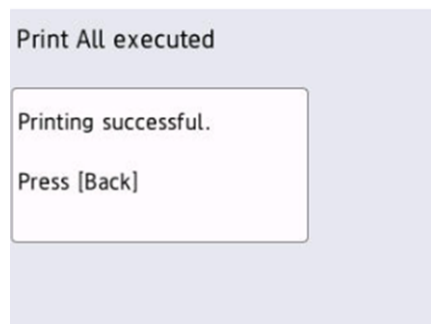
This action prints all jobs that are waiting in queue in the Ready and Paused states, including jobs delegated by other users.

Both Credit and Quota must be disabled on the server for this action to function.

If a new job becomes ready while user is logged into the terminal, the page won't update automatically. However, if there are no ready jobs, tapping the **Print All (0)** button will refresh the page.

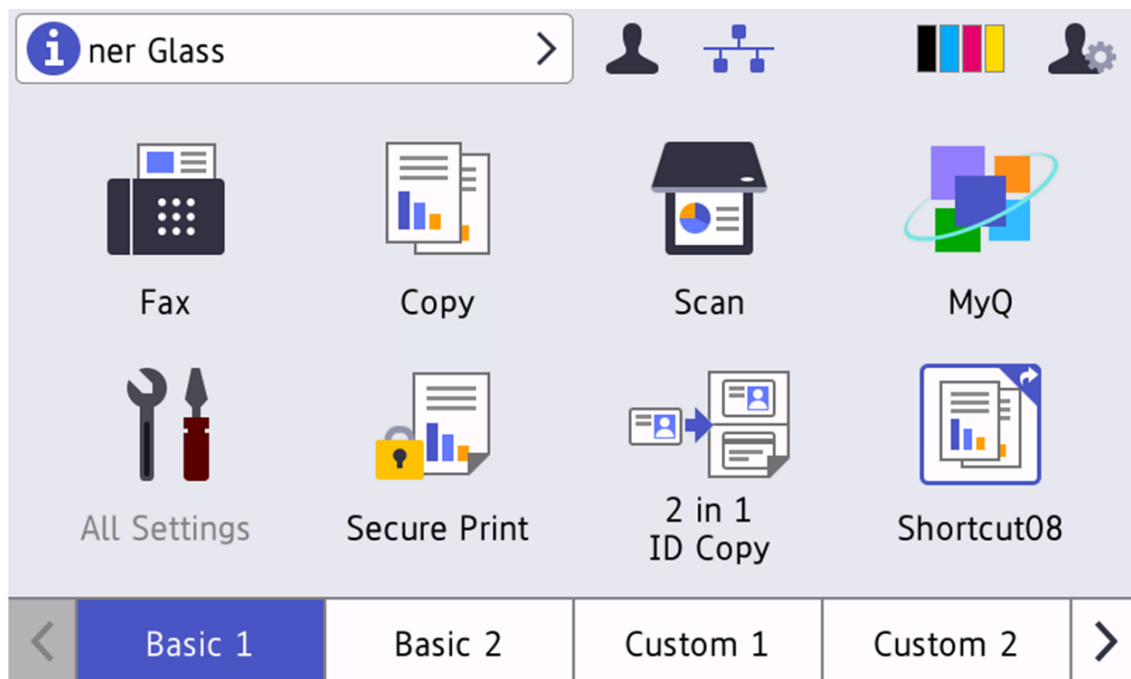


Once the jobs are released the following message is displayed.



You can configure the device to display **Print All** immediately after login (**Administrator > Solutions > Screen displayed after Login** should be set to **Solutions Menu**).

Alternatively, it can be displayed after the pressing the Solution button (**Administrator > Solutions > Screen displayed after Login** should be set to **Home Screen**).



3.2 Panel Scan

To use Panel Scan it is required to configure the SMTP settings directly in the device web UI.

1. Go to the printer's web UI by accessing http://*IP address of the printer*/.
2. Select **Open Secure Login**.
3. Provide the device administrator password and click **Login**.
4. Go to **Scan > Scan to E-mail Server**.
 - a. Set the **Server Address** to the IP Address/hostname of SMTP server. Do not use the IP address/hostname of MyQ server. Panel Scan must be sent directly to the SMTP server.
 - b. Set the **Port** of the SMTP server.
 - c. Set the **Server Authentication method**, **SMTP-AUTH Account Name**, **SMTP-AUTH Account Password** and **SSL/TLS** if required by the SMTP server.
 - d. Set the **Device E-mail Address**.