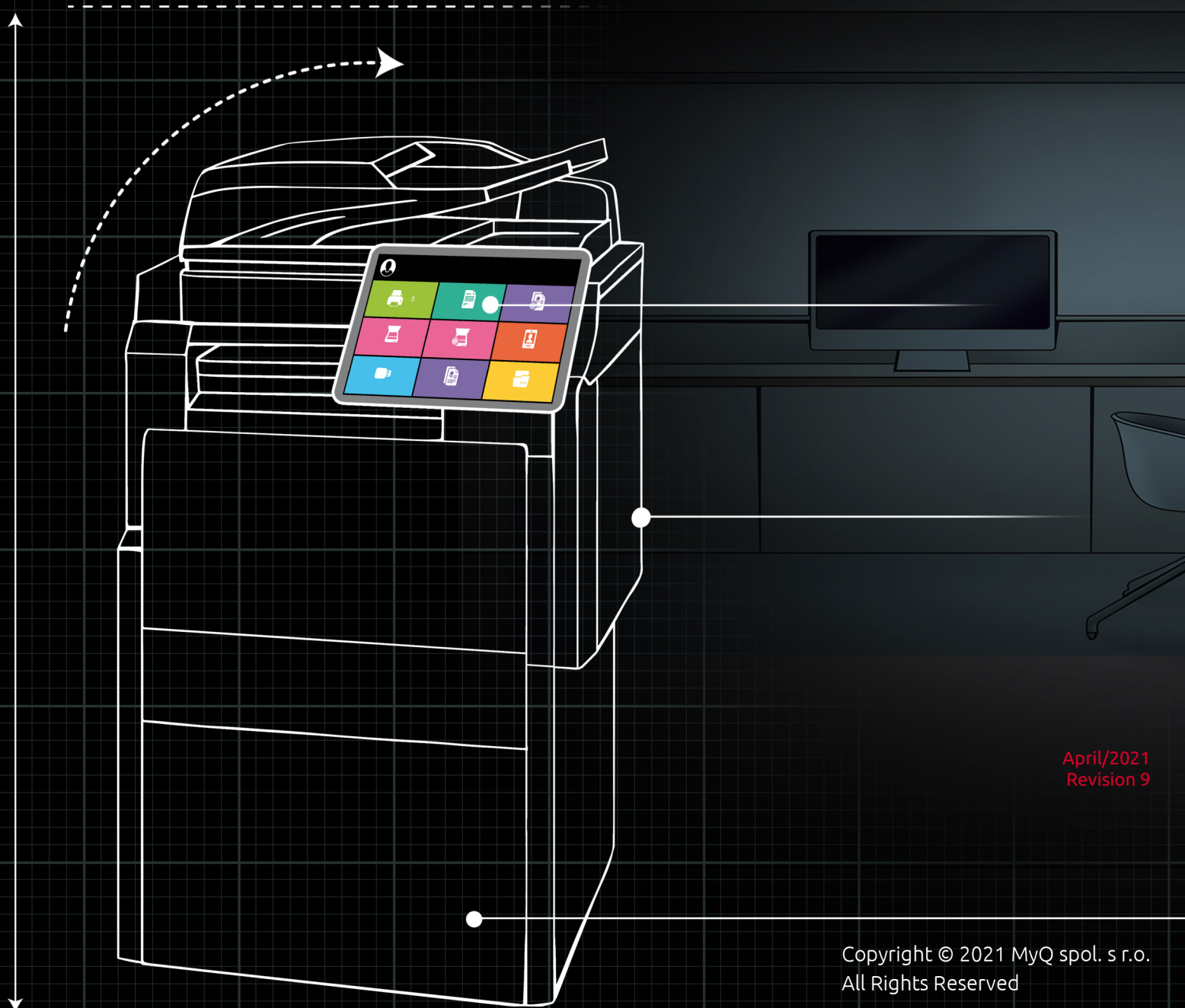


myQ X

Smart Job Manager Win



April/2021
Revision 9


Copyright © 2021 MyQ spol. s r.o.
All Rights Reserved


Table of Contents

1	Basic Information	4
2	Installation.....	5
2.1	Installation via the setup wizard	5
2.1.1	IP subnet CSV file information	6
2.2	Silent Installation	6
3	Changing SJM settings.....	8
3.1	Via the Setup Wizard	8
3.2	Via the Silent Setup	8
4	Advanced Setup.....	9
5	User Identification	10
5.1	Identifying the user by logging in.....	10
5.2	Identifying the user by selecting from the list of all MyQ users	11
6	User Account Information	13
7	Job Management	14
7.1	Interactive Job Processing	15
7.2	Project Management.....	16
8	Uninstalling MyQ SJM	18
8.1	Uninstallation via the Setup Wizard	18
8.2	Silent uninstallation.....	18
9	Upgrading MyQ SJM.....	20
10	Change Log.....	21
10.1	Release notes from 8.1 to 8.2.....	21
11	Business Contacts	22

MyQ Smart Job Manager for Windows 8.2

The MyQ Smart Job Manager application is a client of the MyQ print server. It is installed on Windows workstations of MyQ users and enables identification of the users and communication between the users and the server.

 All changes compared to the previous version are listed in the [change log](#).

 The guide is also available in **PDF**, along with guides for older supported versions.

1 Basic Information

The MyQ Smart Job Manager application is a client of the MyQ print server. It is installed on the MyQ users Windows workstations. MyQ SJM enables user identification, and communication between the users and the server.

You can install the application either via an installation wizard or silently, via a command line with parameters.

The maximum recommended number of concurrent SJM clients connected to one MyQ server is 1000.

Requirements on the client's workstation:

- Supported OS:
 - Windows 8+
 - Windows 10
- Microsoft .NET Framework 4.7.2 or higher

2 Installation

You can install the application either via an installation wizard or silently via a command line with parameters.



Before starting the installation, create a queue on the MyQ web administrator interface with **User Detection Method** set to *Smart Job Manager*.

2.1 Installation via the setup wizard

To install MyQ Smart Job Manager via the setup wizard, follow the steps below:

1. Download the latest available version of the installation file from the MyQ Community portal.
2. Run the installation file. The MyQ Smart Job Manager setup wizard dialog opens.
3. Click **Next**. The End-User License Agreement window opens.
4. Select **I accept the terms in the License Agreement** and click **Next**. The Select Installation Folder window opens.
5. Accept the default folder (*C:\Program Files\MyQ\Smart Job Manager*) and click **Next**, or click **Browse** to select a different path and click **Next**.
6. Set up the application:

- a. **Server address:** Enter the IP address or host name of the MyQ server.
- b. **Server port:** Enter the MyQ server's port. By default, it is *8090* for a secure (SSL) connection.
- c. **Automatically switch between multiple servers:** Check the box if you wish SJM to automatically switch between multiple servers on an IP subnet. This is done by uploading a CSV file with the required information, by adding the exact path to the file in the **CSV file path** field, or by clicking **...** and browsing for the file. Click **Next** once done.

7. **User Authentication:** Select one of the authentication methods and click **Next:**
 - a. **Windows single sign-on:** With this option selected, the job sender is identified as the OS user account, where the jobs are sent from.
 - b. **Login:** With this option selected, the job sender has to log in under their MyQ credentials. The job sender is then identified as the logged in MyQ user. You can select up to three login options: *PIN, Username and password and ID Card*, as well as the **Enable** the *Remember Me* feature, which is used to display/hide the option to remember the logging user.
 - c. **List of MyQ users:** With this option selected, the job sender has to select one of the MyQ user accounts from the list of all MyQ users. The job sender is then identified as the selected MyQ user.
8. Click **Install**.
9. Click **Finish** to leave the setup. SJM is now installed and running in the background.

2.1.1 IP subnet CSV file information

To automatically switch between multiple servers on an IP subnet, the uploaded CSV file should contain the information about the subnets. The file's headers should be **subnet**, **host**, and **port**, as seen on the image below.

	A	B	C	D
1	subnet	host	port	
2	10.14.5.0/24	10.14.5.68	8090	
3	172.18.55.0/24	192.168.3.140	8090	
4				

In case the configuration for the current subnet does not match or something is incorrect on the file or it can't be opened, SJM will use the configuration for the connection from the registry, set during the installation.

- If this feature is enabled, the logic is triggered every time the PC starts or there is an event in the network settings.
- This feature doesn't restart the **Service**, it just updates the settings in the memory.
- If a user is connected on 2 (Wi-Fi, cable) networks and one of them is known, SJM uses the settings for the known network.

2.2 Silent Installation

To silently install the application, download the latest available version of the installation file from the MyQ Community portal, open the Windows command line and use the following command:

```
msiexec /i *InstallationFile* *Parameters* /qn /log "install_sjmlog.log"
```

InstallationFile is the name of the installation file (for example *SmartJobManager-MyQ_8.2.0.42.msi*).

The `/log` command is highly recommended, as it creates a log of the installation process.

Parameters is a string consisting of the following parameters (if you do not include a parameter in the command, its default value is used for the installation):

- **SERVERADDRESS:** MyQ Server's IP address or hostname (the default value is an empty string).
- **SERVERPORT:** MyQ Server's port. The default value is *8080* for MyQ versions lower than 8.0. For MyQ version 8.0 and higher, the default value is *8090*.
- **SERVERSSL:** SSL connection. Use *0* for disabled and *1* for enabled (the default value is *1*)
- **ALTERSERVER:** If this parameter is set to *1*, it enables SJM to automatically switch between multiple servers. It is set to *0* by default.
- **CSVSERVERTABLEINFO:** The path to the CSV file that contains information about the alternative servers to be used.
- **AUTHENTICATIONTYPE:** The methods of authentication of the job sender. Select one of the following (the default value is *0*):
 - **AUTHENTICATIONTYPE=2:** With this option selected, the job sender is identified as the OS user account where the job is sent from.
 - **AUTHENTICATIONTYPE=1:** With this option selected, the job sending user has to log in under their MyQ credentials. The job sender is then identified as the logged in MyQ user.
 - **AUTHENTICATIONTYPE=0:** With this option selected, the job sender has to select one of the MyQ user accounts from the list of all MyQ users. The job sender is then identified as the selected MyQ user.
- **LOGINTYPE:** A letter code with a combination of the these three letters: "**p**" for PIN, "**u**" for Username and password and "**c**" for ID Card. (The default value is an empty string as the default authentication type is the user list selection.)
 - **LOGINTYPE="p"** Enables only PIN
 - **LOGINTYPE="u"** Enables only Username and password
 - **LOGINTYPE="c"** Enables only Card
 - **LOGINTYPE="cp"** enables Card or PIN login
 - **LOGINTYPE="puc"** enables all three login types
- **REMEMBERME:** If you set this parameter to *0*, it will hide the **Remember me** option during the user login. If you set it to *1*, the **Remember me** option will be visible. (The default value is *0* as the default authentication type is the user list selection). This option only works with **AUTHENTICATIONTYPE=1**

Below, you can see an example of the silent installation command line:

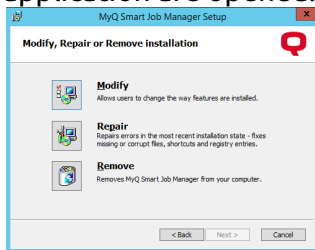
```
msiexec /i "SmartJobManager-MyQ_8.2.0.42.msi" SERVERADDRESS="localhost"
SERVERPORT=8090 SERVERSSL=1 AUTHENTICATIONTYPE=1 LOGINTYPE="puc"
ALTERSERVER=1 CSVSERVERTABLEINFO="C:\MyFiles\networkInformation.csv"
/qn /log "log.txt"
```

3 Changing SJM settings

The settings can be changed either via the application's setup wizard, or via the silent update command on the Windows command line.

3.1 Via the Setup Wizard

1. Run the installation file. The MyQ Smart Job Manager setup dialog box opens.
2. In the dialog box, select the **Modify** option. The setup options of the application are opened.



3. Change the application settings, and then click **Next**.
4. Click **Install** to begin the installation.
5. Click **Finish** to leave the setup. SJM settings are now modified and the application is running in the background.

3.2 Via the Silent Setup

Perform the silent installation with all the parameters values defined in the command line, and add **REINSTALL=ALL** to the parameters' list.

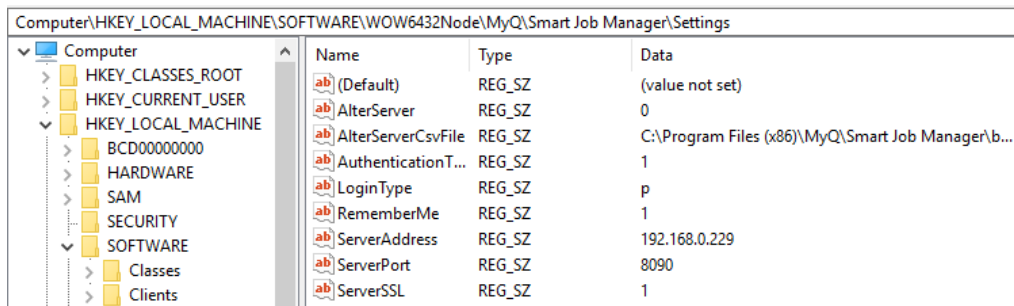
Below, you can see an example of the silent update line:

```
msiexec /i "SmartJobManager-MyQ_8.2.0.42.msi" SERVERADDRESS="localhost"
SERVERPORT=8090 SERVERSSL=1 AUTHENTICATIONTYPE=1 LOGINTYPE="puc"
ALTERSERVER=1 CSVSERVERTABLEINFO="C:\MyFiles\networkInformation.csv"
REINSTALL=ALL /qn
```


4 Advanced Setup

Within the MyQ Smart Job Manager installation, the settings of the application are stored in the Windows registry under *HKEY_LOCAL_MACHINE*. This can be found in the following path:

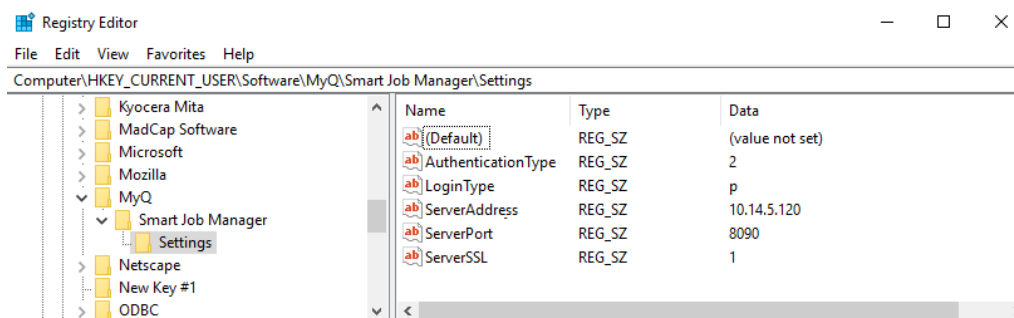
Software\WOW6432Node\MyQ\Smart Job Manager\Settings



Name	Type	Data
(Default)	REG_SZ	(value not set)
AlterServer	REG_SZ	0
AlterServerCsvFile	REG_SZ	C:\Program Files (x86)\MyQ\Smart Job Manager\b...
AuthenticationT...	REG_SZ	1
LoginType	REG_SZ	p
RememberMe	REG_SZ	1
ServerAddress	REG_SZ	192.168.0.229
ServerPort	REG_SZ	8090
ServerSSL	REG_SZ	1

In specific cases where you do not want to use the local machine settings and instead want to set different properties for the currently logged user, you can create a new registry key under *HKEY_CURRENT_USER* with the following path:

Software\MyQ\Smart Job Manager\Settings



Name	Type	Data
(Default)	REG_SZ	(value not set)
AuthenticationType	REG_SZ	2
LoginType	REG_SZ	p
ServerAddress	REG_SZ	10.14.5.120
ServerPort	REG_SZ	8090
ServerSSL	REG_SZ	1

The settings and their values correspond to the parameters described in [Silent installation](#).

5 User Identification

One of the essential functions of the MyQ Smart Job Manager application is to identify the MyQ user on the computer where it is installed. Thanks to this identification, MyQ Smart Job Manager can mediate communication between the user and the MyQ server; it can inform the user about the state of their account, it enables the user to manage their print jobs and it also enables the server to determine the job sender.

Once a job is sent to a queue, the status changes to **Paused** and the user is set to ***unauthenticated** until they authenticate themselves in MyQ SJM. Once they do, the job's status changes to **Ready** and the user changes to the now authenticated job owner. If the authentication in MyQ SJM fails or if the user is not present in the MyQ server, the user is no longer created (needs to be created in MyQ) and the job is rejected.

Depending on how MyQ SJM was set up, the user is either identified as the currently opened OS account or they can identify themselves. The self-identification methods are described in:

- [Identifying the job sender by logging in](#)
- [Identifying the job sender by selecting from the list of all MyQ users](#)

■ The login options are selected within the MyQ Smart Job Manager setup. If you do not want the users to identify themselves, select the **Windows single sign-on** method.

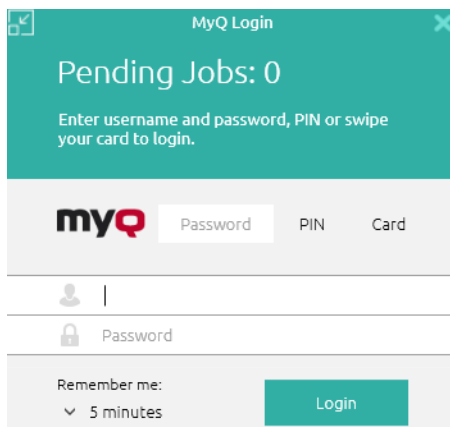
ⓘ For each of the user identification options you need to set up a queue on the MyQ server, with the appropriate user detection method:

- Windows single sign-on -> Job sender
- Login by PIN or Card -> Prompt for a PIN/Card
- Login by Username and Password -> Prompt for a user and password
- User List -> Prompt to select a user from a list

For information on how to set up the queues, see **User detection methods** in the *MyQ Print Server Guide*.

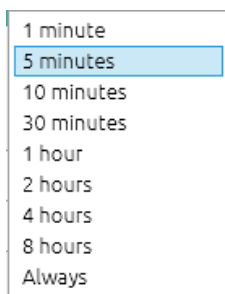
5.1 Identifying the user by logging in

With the **Login** authentication method selected, the user can open the sign in options by clicking **Login** in the application's window (To open the application's window, click the MyQ icon on the Windows system tray). Each time a job is sent to the queue with the respective user detection method (either Prompt for a PIN/Card, or Prompt for a user and password), the user is automatically prompted to log in.



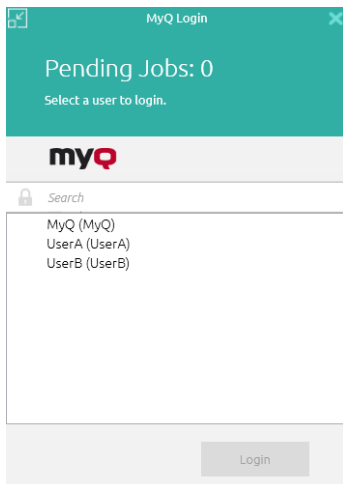
Remember me:

The logging users can select how long they are going to stay signed in for. At the end of the selected time period, the users are signed out and the login credentials are forgotten. Select **Always** to stay logged in even when the OS session is terminated.



5.2 Identifying the user by selecting from the list of all MyQ users

With the **List of MyQ users** authentication method selected, the user can open the list of users by clicking **Login** in the application's window (to open the application's window, click the MyQ icon on the Windows system tray).

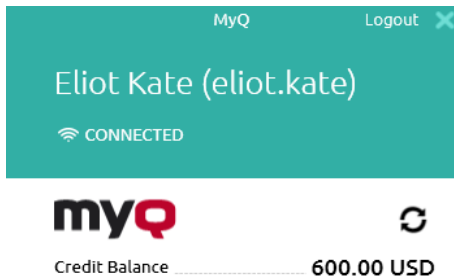


Each time a job is sent to the queue with the **Prompt to select a user from a list** detection method, the user is automatically prompted to select one of the MyQ user accounts from the list.

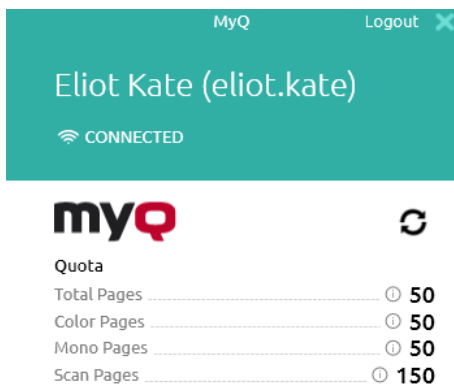
6 User Account Information

Once the user signs in, they can click MyQ SJM's icon on the Windows system tray to open it. In this window, they can see their username and full name.

If the credit accounting is enabled on the MyQ server and applied to the user, they can also see the current state of their credit.



If quota is enabled on the MyQ server and applied to the user, they can also see the current state of their quota.



The **Logout** button logs the user out of the account.

7 Job Management

The MyQ Smart Job Manager application enables the user to simply manage their print jobs on the computer where the jobs are sent from. This option is available if at least one of the three following features is enabled on the MyQ server:

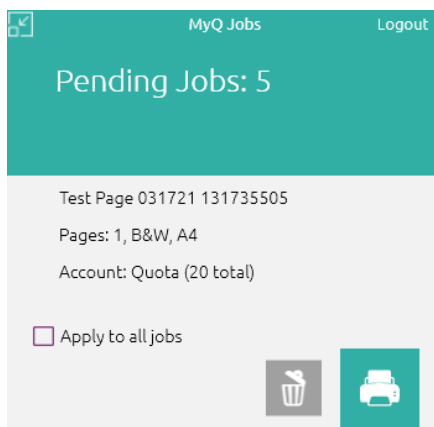
- The queue where the job is sent has the user detection method set to **Prompt for PIN/Card, Prompt for Username and Password** or **Select user from list**. User detection methods are described in [User Identification](#).
- User interaction script is set on the queue where the job is sent to; described in [Interactive job processing](#).
- Projects are enabled and the sending user has access to at least one project; described in [Project management](#).

Submitting and deleting sent print jobs

With the above mentioned features enabled on the MyQ server, sent jobs require additional information before they can be printed. After these jobs are sent to the MyQ server, they are paused there and cannot be printed until the necessary information is provided, for example until their project is selected.

Each time the job is paused, the job management window of the MyQ Smart Job Manager application appears on the screen. In this window, the user can submit the job by clicking the printer icon or delete it by clicking the bin icon. They can also select the **Apply to all jobs** option to submit or delete all the jobs in this way.

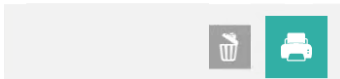
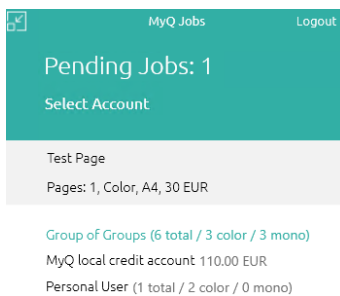
Selecting **Logout** without any action will also delete the logged in user's print jobs. When the user logs out, all the unprinted jobs are, for security reasons, deleted from the server; no one else on a shared computer can now print those jobs.



Depending on the Accounting settings (accounting group or cost center) on the server, the user may be prompted to select an account where the job will be charged to.

- **In the Accounting Group mode:**
 - Internal credit, external credit, and combined quotas (personal, shared, both) are the possible account options.
 - In case of combined quotas, only the lowest quota value is displayed.

- If credit is used, no quota is spent (even when the quota is later edited and recalculated).
- In case the user has personal quota "pages" and shared quota "cost" or vice versa, both pages and cost are displayed. For example: *Quota (10 total/9 color/8 mono/7 scan /3 USD)*
- **In the Cost Center mode:**
 - Internal credit, external credit, personal quota, and multiple shared quotas are the possible accounts options.
 - Only one (selected) quota is spent, so all quotas should be displayed as separate accounts.



- Cost Center selection in SJM should appear only for **Direct Print** queues. If there is only one account available for the user, it is selected and charged automatically, thus there is no **Select Account** prompt.

7.1 Interactive Job Processing

With this feature, users can be informed about important print job properties and can be asked if they want to change some of them; for example to print in duplex or in black and white.

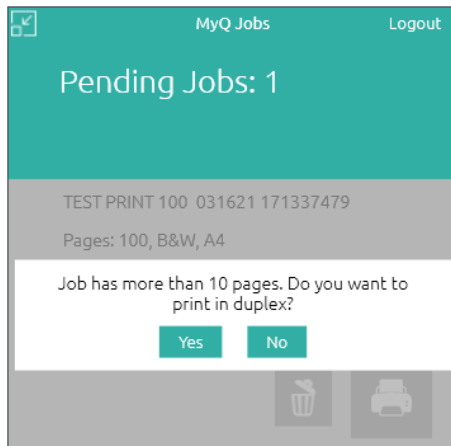
To enable this option, the MyQ administrator has to add a PHP script to the queue where the job is sent.

There are three dialog options available for this feature:

- a dialog box with a text content and Yes/No options
- a dialog box with a text content and Print/No options
- a dialog box with a text content and Yes/No/Cancel options

Jobs sent to a queue with a user interaction script are automatically paused and the job management window with basic information about the job appears on the screen. After the user submits the job, the user interaction dialog box appears.

For example, if a user sends a job with more than 10 pages and submits the job in the job management window, they are informed that the job is large and asked if they want to print it in duplex.

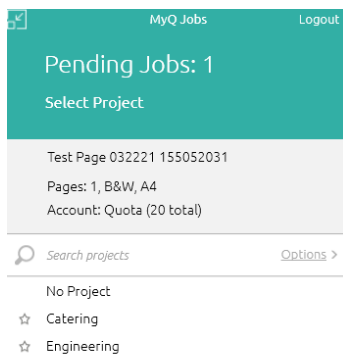


 For more information on PHP job scripting, contact MyQ support.

7.2 Project Management

When project accounting is enabled on the MyQ server, the user who sends the print job needs to select a project (or the *No Project* option) to be allowed to print it. With MyQ Smart Job Manager, they can select the project directly on their computer.

After the print job is sent to MyQ, the application's pop-up window appears. If the user is not identified yet, they need to identify themselves to open the job management options window, where they can select the project. If they are already identified, they are directly shown the project management options.



On the job management window, the user needs to select a project (or the *No Project* option), and then click the printer icon. After this, the project is assigned and the job can be printed. The maximum number of items displayed at once is *15*. Refreshing the list will deselect a selected item.

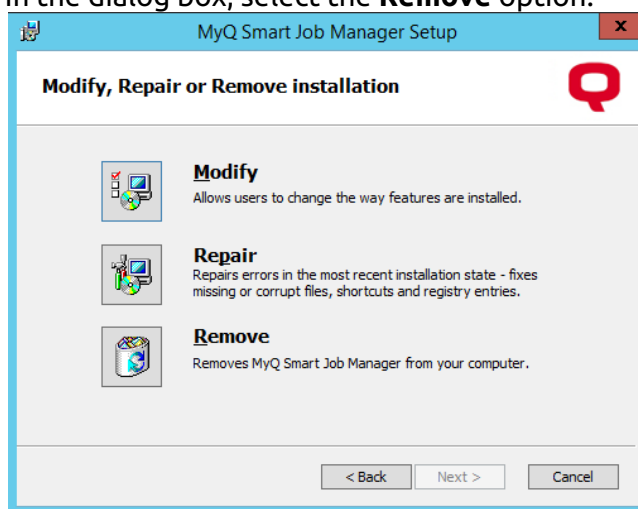
8 Uninstalling MyQ SJM

The application can be uninstalled either via the setup wizard, or via silent uninstallation on the Windows command line.

8.1 Uninstallation via the Setup Wizard

To uninstall the application via the setup wizard:

1. In Windows Settings, click **Apps**. The Apps and features menu opens.
2. On the menu, select the MyQ Smart Job Manager app and click **Uninstall**. When asked, confirm the uninstallation. The MyQ Smart Job Manager setup dialog box opens.
3. In the dialog box, select the **Remove** option.



4. Click **Remove** to confirm the uninstallation.
5. Click **Finish** to leave the setup wizard. MyQ SJM is removed from the computer.

8.2 Silent uninstallation

To silently uninstall the application, open the Windows command line, and:

1. Find the **IdentifyingNumber** of the MyQ Smart Job Manager application via the following command: `wmic product where "Name like '%Smart%' get Name, Version, IdentifyingNumber`
2. Uninstall the application via the following command: `msiexec.exe /x *{IdNumber}*` where `*{IdNumber}*` is the Identifying Number of the application.

```
C:\WINDOWS\system32\cmd.exe
Microsoft Windows [Version 10.0.17134.765]
(c) 2018 Microsoft Corporation. All rights reserved.

C:\Users\joachim>wmic product where "Name like'%Smart%'" get Name, Version, IdentifyingNumber
'wmic product where "Name' is not recognized as an internal or external command,
operable program or batch file.

C:\Users\joachim>wmic product where "Name like'%Smart%'" get Name, Version, IdentifyingNumber
IdentifyingNumber      Name                Version
{E618DB29-90FA-4616-B0B6-BAC423AC5EA2} MyQ Smart Job Manager 7.4.0.4
{22525149-CD87-411E-A525-6048C1C31D2F} MyQ Smart Print Services 7.4.0.3

C:\Users\joachim>msiexec.exe /x {E618DB29-90FA-4616-B0B6-BAC423AC5EA2}
```

9 Upgrading MyQ SJM

To upgrade MyQ Smart Job Manager to the latest version:

- Uninstall your current MyQ SJM version. Make sure to use the same method you used during the installation (setup wizard or silent method).
- Go to the MyQ Community portal and download the latest MyQ SJM installation file.
- Install the latest MyQ SJM version. Make sure to use the same method you used during the previous MyQ SJM installation (setup wizard or silent method).

■ If you are upgrading from version 7.5.0 to 7.5.1, there is no need to uninstall the older version. Simply run version's 7.5.1 installer.

10 Change Log

10.1 Release notes from 8.1 to 8.2

- [Installation](#) simplified - Client ID and Client Secret no longer needed.
- More details in [user account information](#).
- [Select account](#) prompt now available, which allows the user to select the account that the job is charged to.

11 Business Contacts

MyQ® Manufacturer	MyQ® spol. s r.o. Harfa Office Park, Ceskomoravska 2420/15, 190 93 Prague 9, Czech Republic MyQ® Company is registered in the Companies register at the Municipal Court in Prague, division C, no. 29842
Business information	www.myq-solution.com info@myq-solution.com
Technical support	support@myq-solution.com
Notice	<p>MANUFACTURER WILL NOT BE LIABLE FOR ANY LOSS OR DAMAGE CAUSED BY INSTALLATION OR OPERATION OF THE SOFTWARE AND HARDWARE PARTS OF THE MyQ® PRINTING SOLUTION.</p> <p>This manual, its content, design and structure are protected by copyright. Copying or other reproduction of all or part of this guide, or any copyrightable subject matter without the prior written consent of MyQ® Company is prohibited and can be punishable.</p> <p>MyQ® is not responsible for the content of this manual, particularly regarding its integrity, currency and commercial occupancy. All the material published here is exclusively of informative character.</p> <p>This manual is subject to change without notification. MyQ® Company is not obliged to make these changes periodically nor announce them, and is not responsible for currently published information to be compatible with the latest version of the MyQ® printing solution.</p>
Trademarks	<p>MyQ®, including its logos, is a registered trademark of MyQ® company. Microsoft Windows, Windows NT and Windows Server are registered trademarks of Microsoft Corporation. All other brands and product names might be registered trademarks or trademarks of their respective companies.</p> <p>Any use of trademarks of MyQ® including its logos without the prior written consent of MyQ® Company is prohibited. The trademark and product name is protected by MyQ® Company and/or its local affiliates.</p>